

UNIVERSAL CITY, TEXAS

# TACAN RWY 15R

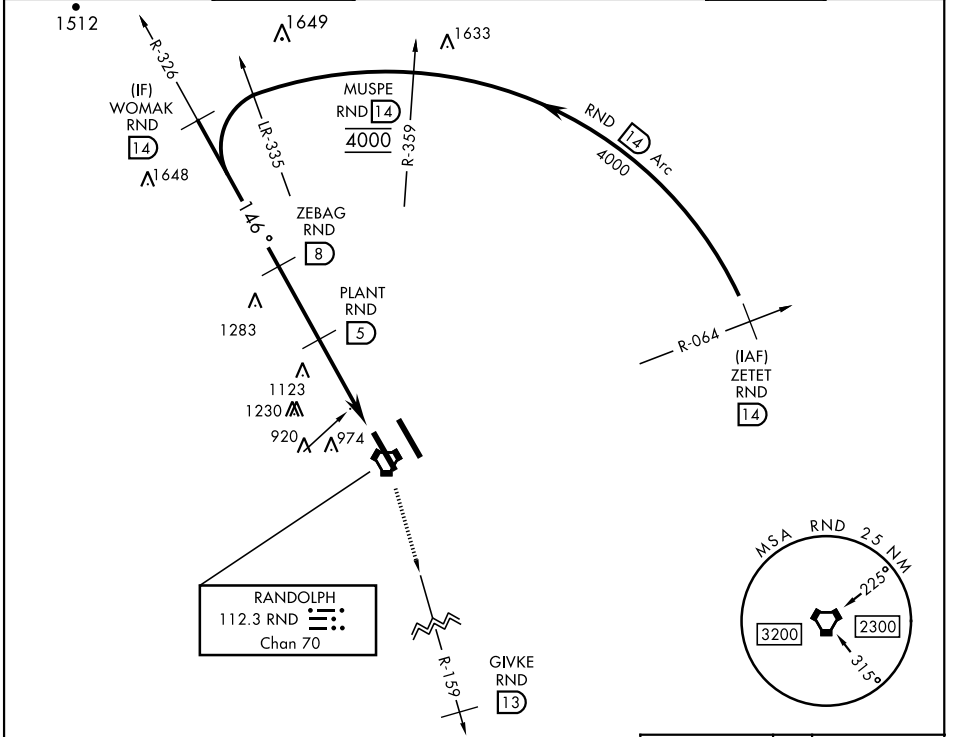
VORTAC RND <b>112.3</b> Chan <b>70</b>	APCH CRS <b>146°</b>	Rwy Idg TDZE <b>8352</b> <b>761</b> Arprt Elev <b>761</b>	AL-341 [USAF]	RANDOLPH AFB (KRND)
--	-------------------------	--	---------------	---------------------

RADAR required.

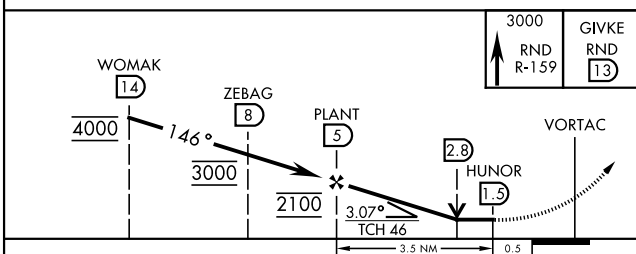
\* Circling not authorized NE of Rwy 15R-33L.

MISSED APPROACH: Climb to 3000 out RND VORTAC R-159 to 13 DME (GIVKE). Expect ATC instructions.

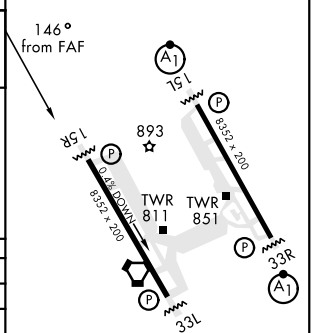
ATIS ★ <b>290.525</b>	SAN ANTONIO APP CON <b>128.05 318.1</b>	TOWER ★ <b>128.25 294.7</b>	GND CON <b>119.65 275.8</b>	CLNC DEL (RWY 15L-33R) <b>338.35</b>	HANGOVER ATIS ★ <b>327.8</b>	HANGOVER TOWER ★ <b>120.5 291.1</b>	HANGOVER GND CON <b>124.75 353.75</b>
--------------------------	--	--------------------------------	--------------------------------	---	---------------------------------	--	--



EMERG SAFE ALT 100 NM 4100



ELEV <b>761</b>	TDZE <b>761</b>
-----------------	-----------------



CATEGORY	A	B	C	D	E
S-15R	1380/55 619 (700-1)		1380-1 619 (700-1)		
CIRCLING*	1380-1 619 (700-1)		1500-2 739 (800-2)	1800-3 1039 (1100-3)	

HIRL all rwys  
ALS Rwy 15L nstd len 2100'

UNIVERSAL CITY, TEXAS  
Amdt 2 19MAY22

29°32'N-98°17'W

RANDOLPH AFB (KRND)

# TACAN RWY 15R

SC-3, 16 JUN 2022 to 14 JUL 2022

SC-3, 16 JUN 2022 to 14 JUL 2022