

TACAN RWY 33L

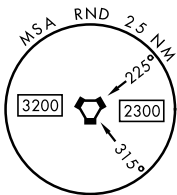
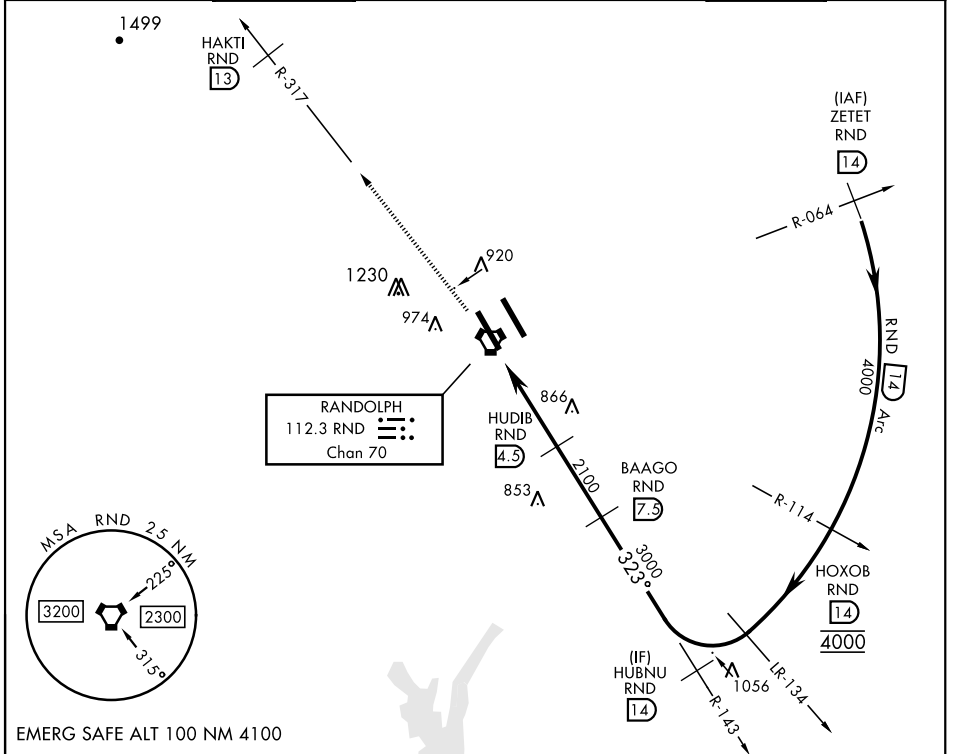
VORTAC RND 112.3 Chan 70	APCH CRS 323°	Rwy Idg TDZE Arprt Elev 8352 733 761	AL-341 [USAF]	RANDOLPH AFB (KRND)
--	-------------------------	--	---------------	---------------------

RADAR required.

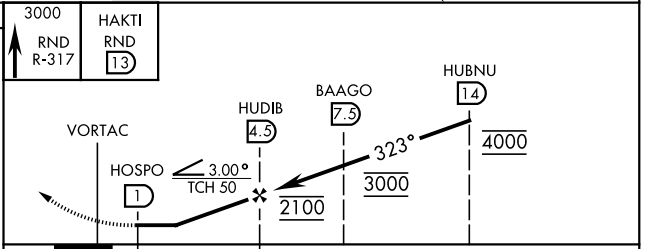
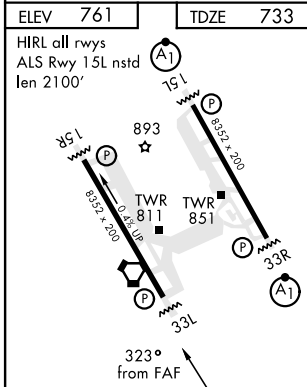
* Circling not authorized NE of Rwy 15R-33L.

MISSED APPROACH: Climb to 3000 out RND VORTAC R-317 to RND 13 DME (HAKTI). Expect ATC instructions.

ATIS ★ 290.525	SAN ANTONIO APP CON 128.05 318.1	TOWER ★ 128.25 294.7	GND CON 119.65 275.8	CLNC DEL (RWY 15L-33R) 338.35	HANGOVER ATIS ★ 327.8	HANGOVER TOWER ★ 120.5 291.1	HANGOVER GND CON 124.75 353.75
--------------------------	--	--------------------------------	--------------------------------	---	---------------------------------	--	--



EMERG SAFE ALT 100 NM 4100



CATEGORY	A	B	C	D	E
S-33L	1120/55 387 (400-1)		1120/60 387 (400-1½)		
C CIRCLING*	1240-1 479 (500-1)	1280-1 519 (600-1)	1500-2 739 (800-2)	1800-3 1039 (1100-3)	

TACAN RWY 33L

SC-3, 16 JUN 2022 to 14 JUL 2022

SC-3, 16 JUN 2022 to 14 JUL 2022