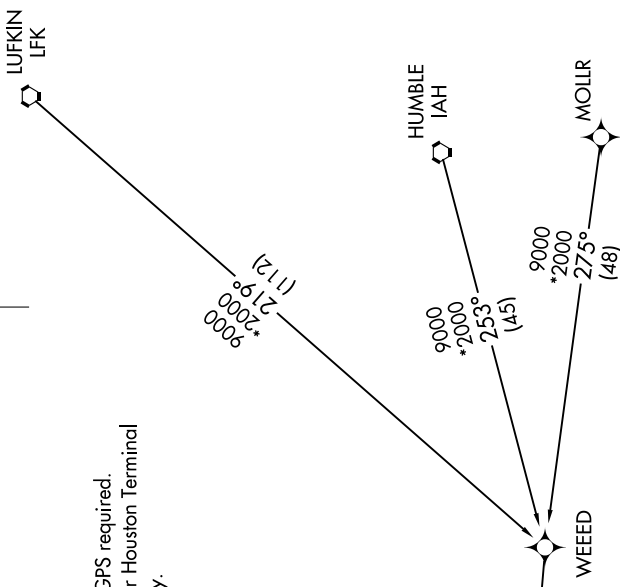


BRAUN THREE ARRIVAL (RNAV) Transition Routes

SAN ANTONIO, TEXAS

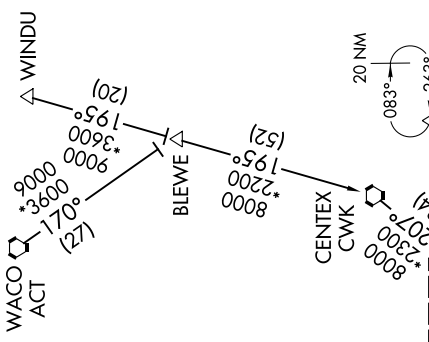
SAN ANTONIO APP CON
 127.1 269.1
 KRND ATIS *
 290.525
 SAT D-ATIS
 118.9
 SKF ATIS
 120.45 273.5
 SSF ATIS
 128.8



NOTE: RADAR required.
 NOTE: RNAV 1.
 NOTE: DME/DME/IRU or GPS required.
 NOTE: WALLN transition for Houston Terminal Area Departures only.

NOTE: Chart not to scale

- HUMBLE TRANSITION (IAH.BRAUN3)
- LUFKIN TRANSITION (LFK.BRAUN3)
- MOLLR TRANSITION (MOLLR.BRAUN3)
- WACO TRANSITION (ACT.BRAUN3)
- WALLN TRANSITION (WALLN.BRAUN3)
- WINDU TRANSITION (WINDU.BRAUN3)



See Arrival Routes On Following Page

MARCS VERTICAL NAVIGATION PLANNING INFORMATION

Turbojets: Expect 13000

(CONTINUED ON FOLLOWING PAGE)

SC-3, 16 JUN 2022 to 14 JUL 2022

SC-3, 16 JUN 2022 to 14 JUL 2022

BRAUN THREE ARRIVAL (RNAV) Transition Routes

SAN ANTONIO, TEXAS