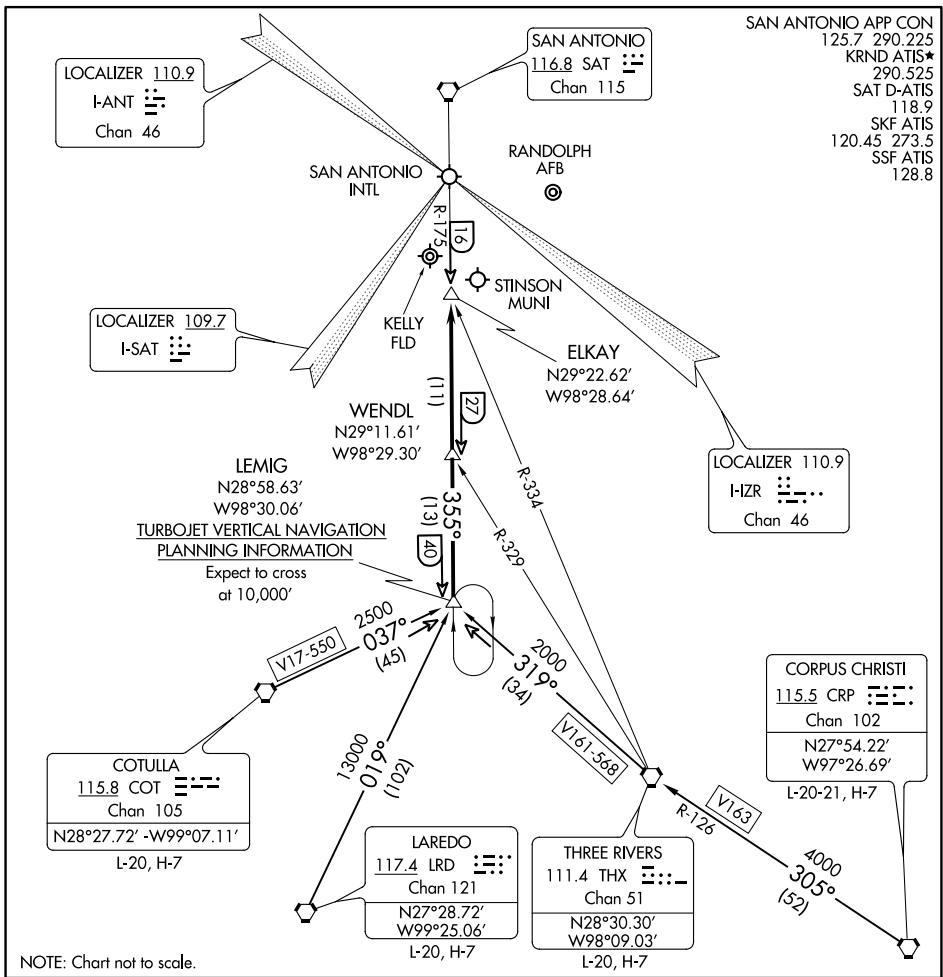


LEMIG ONE ARRIVAL

SAN ANTONIO, TEXAS



SAN ANTONIO APP CON
 125.7 290.225
 KRND ATIS*
 290.525
 SAT D-ATIS
 118.9
 SKF ATIS
 120.45 273.5
 SSF ATIS
 128.8

SC-3, 16 JUN 2022 to 14 JUL 2022

SC-3, 16 JUN 2022 to 14 JUL 2022

ARRIVAL ROUTE DESCRIPTION

CORPUS CHRISTI TRANSITION (CRP.LEMIG1): From over CRP VORTAC via CRP R-305 and THX R-126 to THX VORTAC, then via THX R-319 to LEMIG INT.

Thence

COTULLA TRANSITION (COT.LEMIG1): From over COT VORTAC via COT R-037 to LEMIG INT. Thence

LAREDO TRANSITION (LRD.LEMIG1): From over LRD VORTAC via LRD R-019 to LEMIG INT. Thence

THREE RIVERS TRANSITION (THX.LEMIG1): From over THX VORTAC via THX R-319 to LEMIG INT. Thence

. . . . ALL AIRPORTS: From over LEMIG INT via SAT R-175 to ELKAY INT. Expect radar vectors to final approach course.

LEMIG ONE ARRIVAL

SAN ANTONIO, TEXAS