

MARCS ONE ARRIVAL

SAN ANTONIO, TEXAS

SAN ANTONIO APP CON

127.1 269.1
KRND ATIS★
290.525
SAT D-ATIS
118.9
SKF ATIS
120.45 273.5
SSF ATIS
128.8

WACO
115.3 ACT
Chan 100
N 31°39.74' - W 97°16.14'
L-19, H-6

MAVERICK
113.1 TTT
Chan 78

GOOCH SPRINGS
112.5 AGJ
Chan 72

BLEWE
N31°12.46'
W97°12.54'

WINDU
N31°31.83'
W97°04.95'
L-19, H-6

MARCS
N29°53.87'
W97°51.68'
L-15, H-7
TURBOJET VERTICAL
NAVIGATION PLANNING
INFORMATION
Expect 13000

LUFKIN
112.1 LFK
Chan 58
N31°09.75'-W94°43.01'
L-19-21, H-6

CENTEX
112.8 CWK
Chan 75
N30°22.71'-W97°31.79'
L-19-21, H-7

STONEWALL
113.8 STV
Chan 85

INDUSTRY
110.2 IDU
Chan 39
N29°57.36'-W96°33.73'
L-19-21, H-7

LOCALIZER 110.9
I-ANT
Chan 46

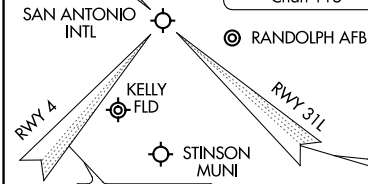
TROOP
N29°40.84'
W98°22.52'

BRAUN
N29°48.77'
W98°03.79'

CRAYS
N29°55.11'
W97°25.99'

SAN ANTONIO
116.8 SAT
Chan 115

NOTE: RADAR required.



LOCALIZER 109.7
I-SAT
Chan 46

LOCALIZER 110.9
I-HZ
Chan 46

(NARRATIVE ON FOLLOWING PAGE)

NOTE: Chart not to scale

SC-3, 16 JUN 2022 to 14 JUL 2022

SC-3, 16 JUN 2022 to 14 JUL 2022

MARCS ONE ARRIVAL

SAN ANTONIO, TEXAS