

# HI-TACAN Z RWY 36

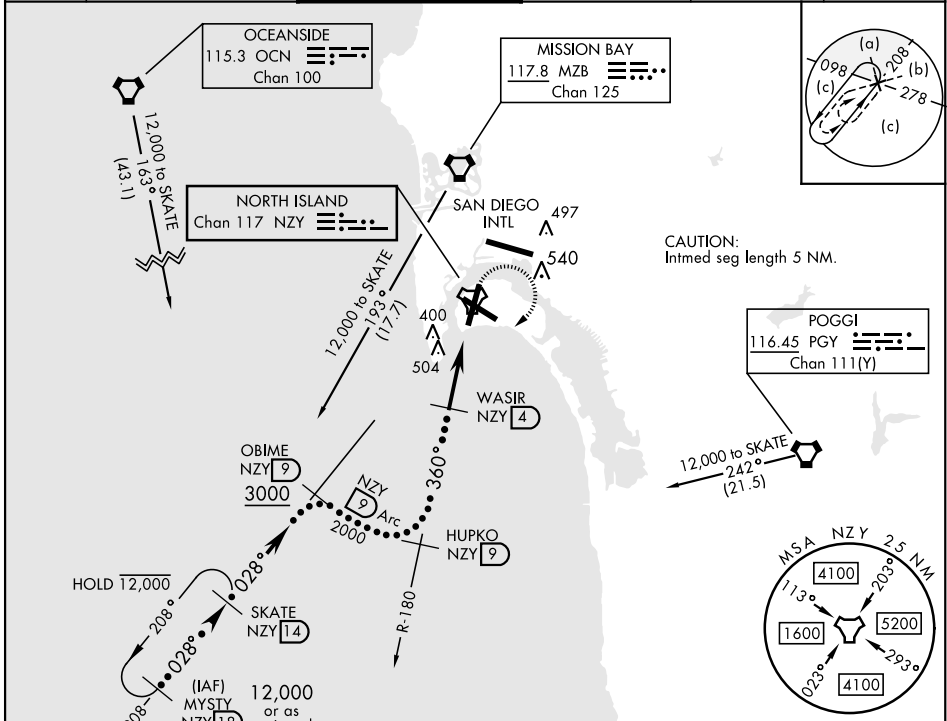
TACAN NZY Chan <b>117</b>	APCH CRS <b>360°</b>	Rwy ldg TDZE Arpt Elev <b>8000</b> <b>19</b> <b>26</b>
------------------------------	-------------------------	---

AL-374 [USN]

NORTH ISLAND NAS (HALSEY FIELD) (KNZY)

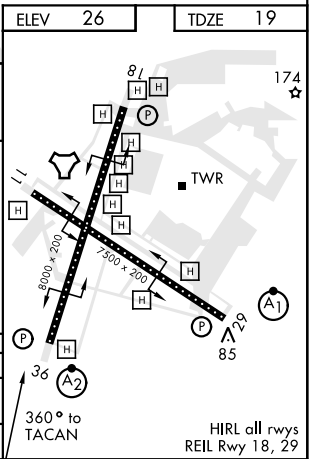
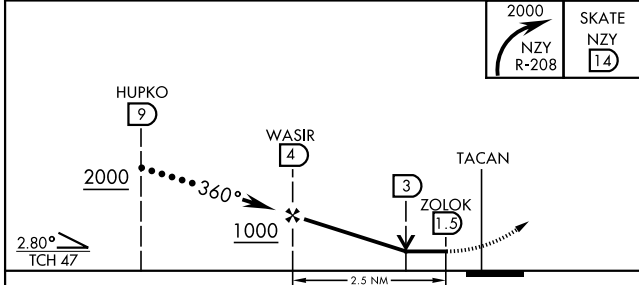
<p>▼ * When ALS inop, increase vis to 2 miles.</p>	<p>SALSF A2</p>	<p>MISSED APPROACH: Climbing right turn to 2000 intercept the NZY TACAN R-208 to SKATE and hold.</p>
--	---------------------	--

<p>ATIS ★ <b>317.8</b></p>	<p>SOCAL APP CON <b>125.15 317.55</b></p>	<p>TOWER ★ <b>135.1 336.4</b></p>	<p>GND CON <b>118.0 360.675</b></p>	<p>CLNC DEL <b>128.4 288.25</b></p>	<p>PAR/ASR</p>
--------------------------------	---	---------------------------------------	---	---	----------------



CAUTION: Intmd seg length 5 NM.

ELEV 26	TDZE 19
---------	---------



CATEGORY	C	D	E
S-36 *	760-1 7/8 741 (800-1 7/8)		
CIRCLING	NOT AUTHORIZED		

SAN DIEGO, CALIFORNIA 32°42'N-117°13'W NORTH ISLAND NAS (HALSEY FIELD) (KNZY)

Amdt 4 05NOV20

# HI-TACAN Z RWY 36

SW-3, 16 JUN 2022 to 14 JUL 2022

SW-3, 16 JUN 2022 to 14 JUL 2022