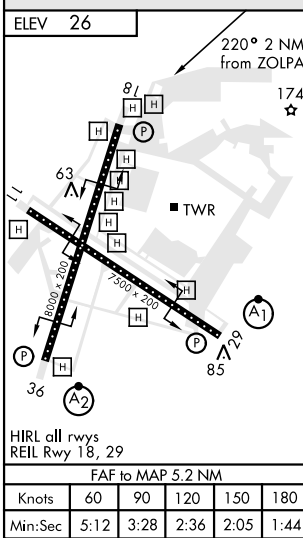
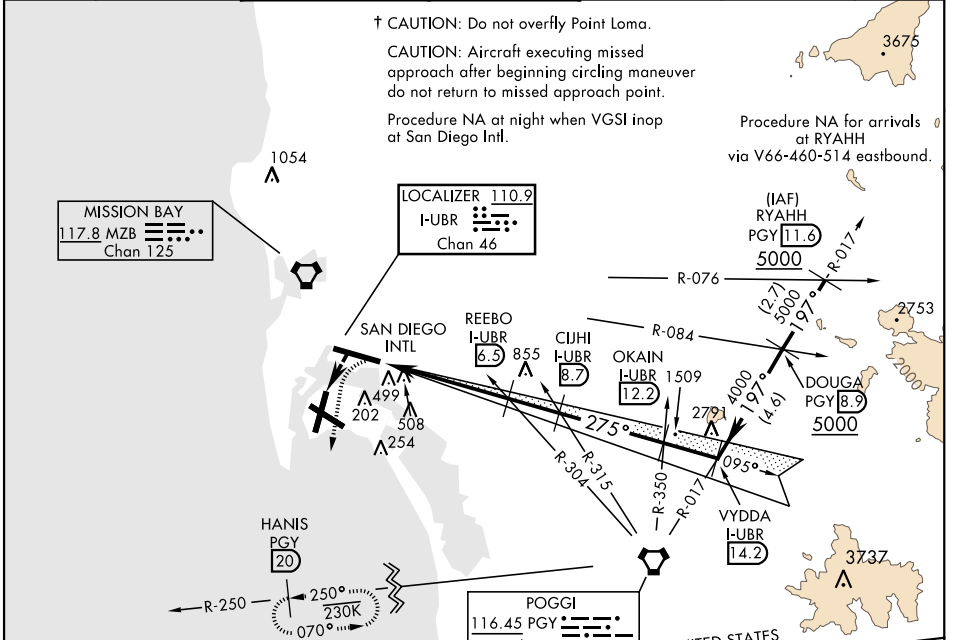


# LOC/DME-A

LOC/DME I-UBR <b>110.9</b> Chan <b>46</b>	APCH CRS <b>275°</b>	Rwy Idg THRE Arprt Elev <b>N/A</b> <b>N/A</b> <b>26</b>	AL-374 [USN]	NORTH ISLAND NAS (HALSEY FIELD) (KNZY)
---	-------------------------	--	--------------	--

⚠ \* CAUTION: Maneuvering for circling approach not authorized W of Rwy18-36 centerline. Approach authorized for Rwy 18 or left downwind approach to Rwy 29 after flying down Rwy 18.
 † MISSED APPROACH: Climb and maintain 2000 via hdg 177°, intercept PGY VORTAC R-250 to HANIS and hold.

ATIS ★ <b>317.8</b>	SOCAL APP CON <b>125.15 317.55</b>	NORTH ISLAND TOWER★ <b>135.1 336.4</b>	LINDBERGH TOWER <b>118.3 338.225</b>	GND CON <b>118.0 360.675</b>	CLNC DEL <b>128.4 288.25</b>	PAR/ASR
------------------------	---------------------------------------	---	---	---------------------------------	---------------------------------	---------



CATEGORY	A	B	C	D
<b>CIRCLING</b> *	860-2½	834 (900-2½)	880-2½	880-2¾

# LOC/DME-A

SW-3, 16 JUN 2022 to 14 JUL 2022

SW-3, 16 JUN 2022 to 14 JUL 2022