

SAN DIEGO, CALIFORNIA

VOR/DME RWY 29

VORTAC PGY 116.45 Chan 111(Y)	APCH CRS 279°	Rwy ldg TDZE Arprt Elev 7500 26 26
---	-------------------------	--

AL-374 [USN] NORTH ISLAND NAS (HALSEY FIELD) (KNZY)

▼ * When ALS inop, increase CAT AB vis to 1 mile, CAT CD vis to 1¾ miles.
 ** Circling not authorized W of Rwy 18-36.
 Circling authorized to Rwy 18 only.

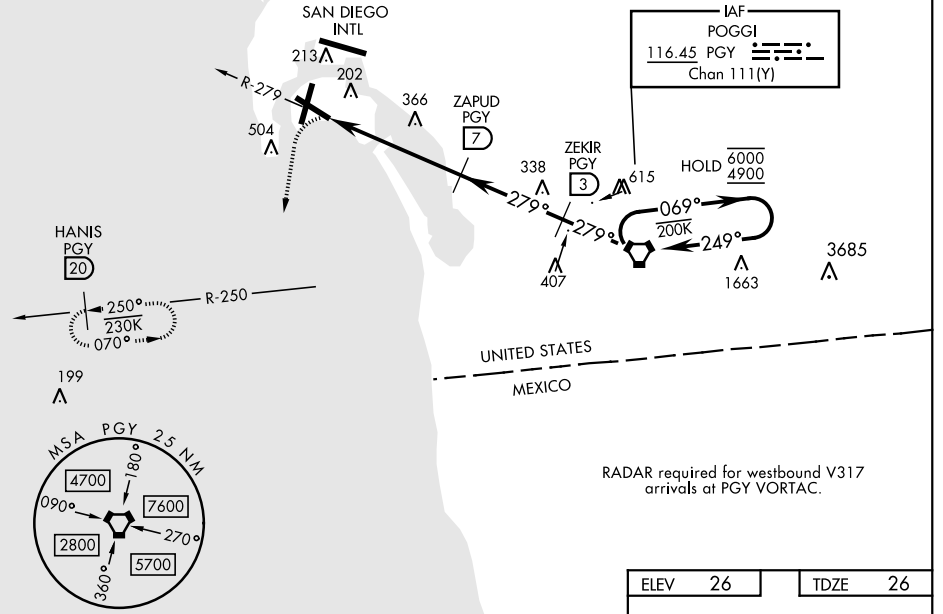


MISSED APPROACH: Climbing left turn to 2000 via hdg 177° intercept PGY VORTAC R-250 to HANIS and hold.

ATIS ★ 317.8	SOCAL APP CON 125.15 317.55	TOWER ★ 135.1 336.4	GND CON 118.0 360.675	CLNC DEL 128.4 288.25	PAR/ASR
------------------------	---------------------------------------	-------------------------------	---------------------------------	---------------------------------	---------

Visibility reduction by helicopters not authorized.

CAUTION:
 Final apch length 12.2 NM.
 Final apch intersects RCL at 3726 ft.
 Final apch crs 117 ft from RCL at 3000 ft from thld.

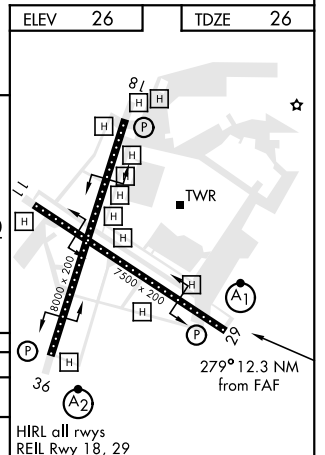
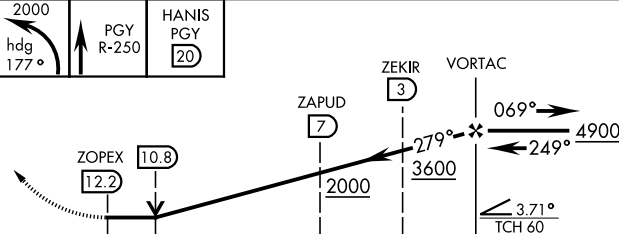


SW-3, 16 JUN 2022 to 14 JUL 2022

SW-3, 16 JUN 2022 to 14 JUL 2022

RADAR required for westbound V317 arrivals at PGY VORTAC.

EMERG SAFE ALT 100 NM 13,600



	ELEV 26		TDZE 26	
CATEGORY	A	B	C	D
S-29 *	660-¾ 634 (700-¾)		660-1¾ 634 (700-1¾)	
◻ CIRCLING **	660-1 634 (700-1)		NOT AUTHORIZED	

SAN DIEGO, CALIFORNIA
Amdt 8 05NOV20

32°42'N-117°13'W NORTH ISLAND NAS (HALSEY FIELD) (KNZY)

VOR/DME RWY 29