



| | | |
|---|------------------------|---|
| LOC/DME I-SEM 110.5 Chan 42 | APP CRS 329° | Rwy Idg 8014 TDZE 165 Apt Elev 166 |
|---|------------------------|---|

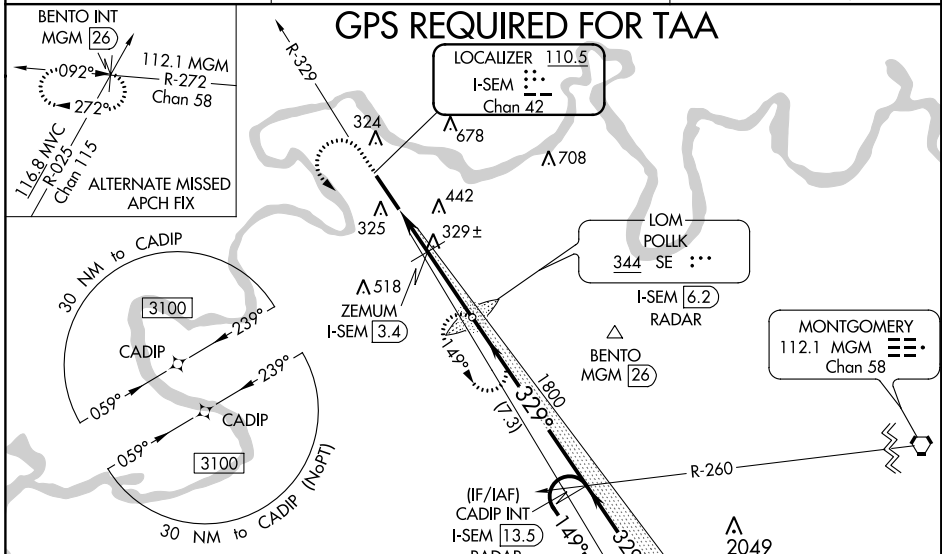
ILS Y or LOC Y RWY 33

CRAIG FIELD (SEM)

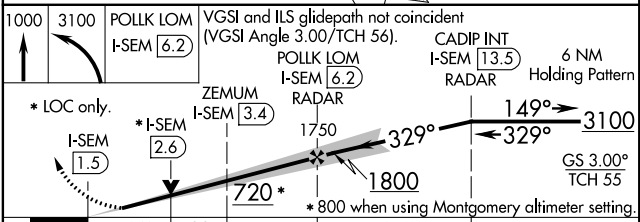
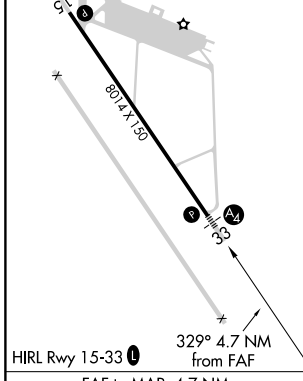
▼ For inoperative MALS, increase S-LOC 33 Cat D visibility to 1½ mile and increase ZEMUM fix minimums S-LOC 33 Cats C and D visibility to 1½ mile. VDP NA with Montgomery altimeter setting. When local altimeter setting not received, use Montgomery altimeter setting and increase DA 78 feet, all MDA 80 feet, increase S-LOC 33 Cats C and D visibility ½ mile, Circling Cat C visibility ½ mile and Circling Cat D visibility ¼ mile, increase ZEMUM fix minimums S-LOC 33 Cats C and D visibility ½ mile and Circling Cat C visibility ½ mile and Circling Cat D visibility ¼ mile. For inoperative MALS, when using Montgomery altimeter setting, increase S-ILS 33 all Cats visibility to ¾ mile, S-LOC 33 Cats C and D visibility to 1¼ mile and increase ZEMUM fix minimums Cats C and D visibility to 1½ mile. ADF required.



MALS

 MISSED APPROACH: Climb to 1000 then climbing left turn to 3100 direct POLLK LOM/I-SEM 6.2 DME/RADAR and hold, continue climb-in-hold to 3100.

| | | |
|---------------------------|--|---|
| AWOS-3PT 119.15 | MONTGOMERY APP CON ★ 124.0 363.025 | UNICOM 122.7 (CTAF)  |
|---------------------------|--|---|



| | |
|----------|----------|
| ELEV 166 | TDZE 165 |
|----------|----------|



| CATEGORY | A | B | C | D |
|--|----------------------|----------------------|------------------------|-------------------------|
| S-ILS 33 | 365-¾ 200 (200-¾) | | | |
| S-LOC 33 | 720-¾ | 555 (600-¾) | 720-1½ | 555 (600-1½) |
|  CIRCLING | 720-1 554 (600-1) | 760-1 594 (600-1) | 760-1½ 594 (600-1½) | 1040-2¾ 874 (900-2¾) |
| ZEMUM FIX MINIMUMS | | | | |
| S-LOC 33 | 580-¾ | 415 (500-¾) | 580-1 | 415 (500-1) |
|  CIRCLING | 660-1 494 (500-1) | 760-1 594 (600-1) | 760-1½ 594 (600-1½) | 1040-2¾ 874 (900-2¾) |

| | | | | | |
|-------------------|------|------|------|------|------|
| FAF to MAP 4.7 NM | | | | | |
| Knots | 60 | 90 | 120 | 150 | 180 |
| Min:Sec | 4:42 | 3:08 | 2:21 | 1:53 | 1:34 |

SE-4, 16 JUN 2022 to 14 JUL 2022

SE-4, 16 JUN 2022 to 14 JUL 2022