

TACOMA, WASHINGTON

# ILS RWY 34 (CAT II)

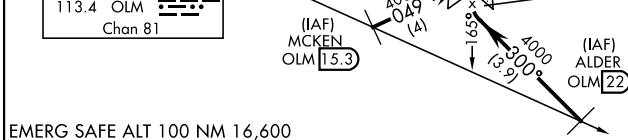
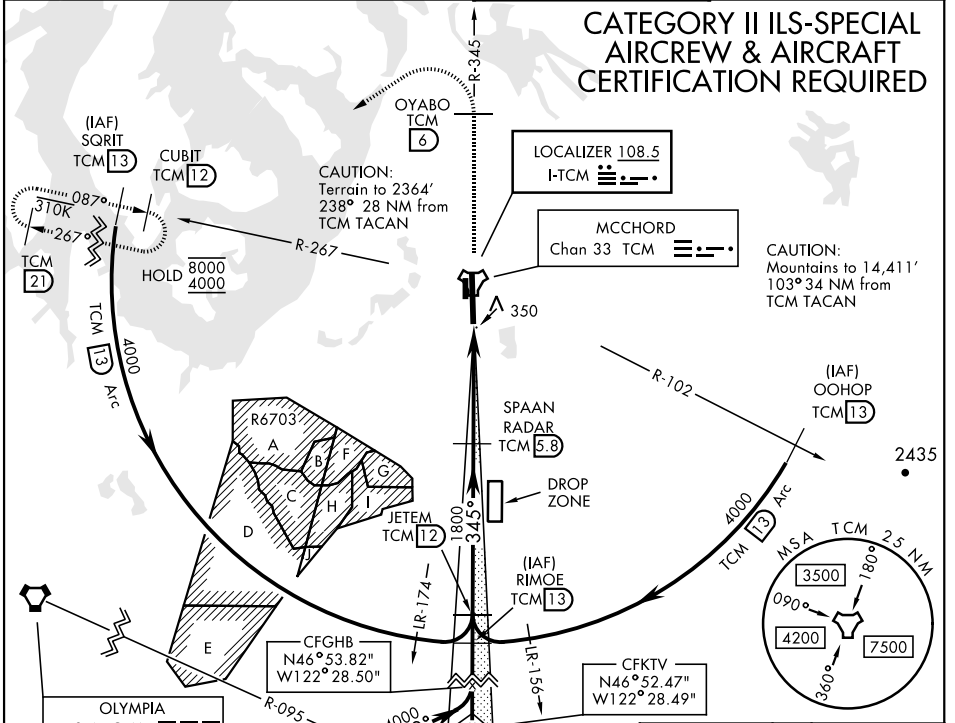
LOC I-TCM <b>108.5</b>	APCH CRS <b>345°</b>	Rwy Idg TDZE Arprt Elev <b>10,108</b> <b>322</b> <b>322</b>
---------------------------	-------------------------	--

AL-414 [USAF]

MCCORD FLD (KTCM)

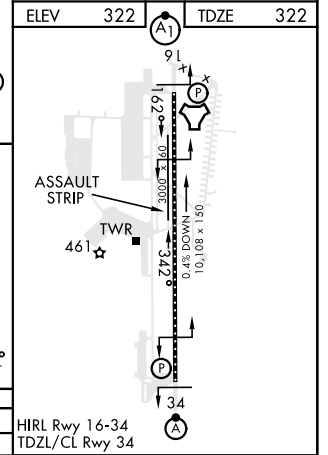
**ALSF-2** MISSED APPROACH: Climb to 4000 on TCM TACAN R-345 to OYABO, then turn left via 215° course to intercept TCM R-267 to CUBIT and hold, continue climb in hold to 4000. Cross OYABO at or above 3000.

ATIS <b>135.825 270.1</b>	SEATTLE APP CON <b>126.5 377.15</b>	TOWER <b>124.8 259.3</b>	GND CON <b>118.175 279.65</b>
------------------------------	--	-----------------------------	----------------------------------



4000 TCM R-345	OYABO tr 215°	CUBIT TCM R-267	SPAAN RADAR 5.8	JETEM 12	RIMOE 13
TACAN 318 MSL					
4.4 NM					
3700					
1800					
345°					
4000					
GS 3.00° TCH 59					

CATEGORY	A	B	C	D	E
S-ILS 34	RA 139/12		100	DA 422	



TACOMA, WASHINGTON 47°08'N-122°29'W MCCORD FLD (KTCM)

Amdt 4 10SEP20

# ILS RWY 34 (CAT II)

NW-1, 16 JUN 2022 to 14 JUL 2022

NW-1, 16 JUN 2022 to 14 JUL 2022