

TACOMA, WASHINGTON

# ILS or LOC RWY 34

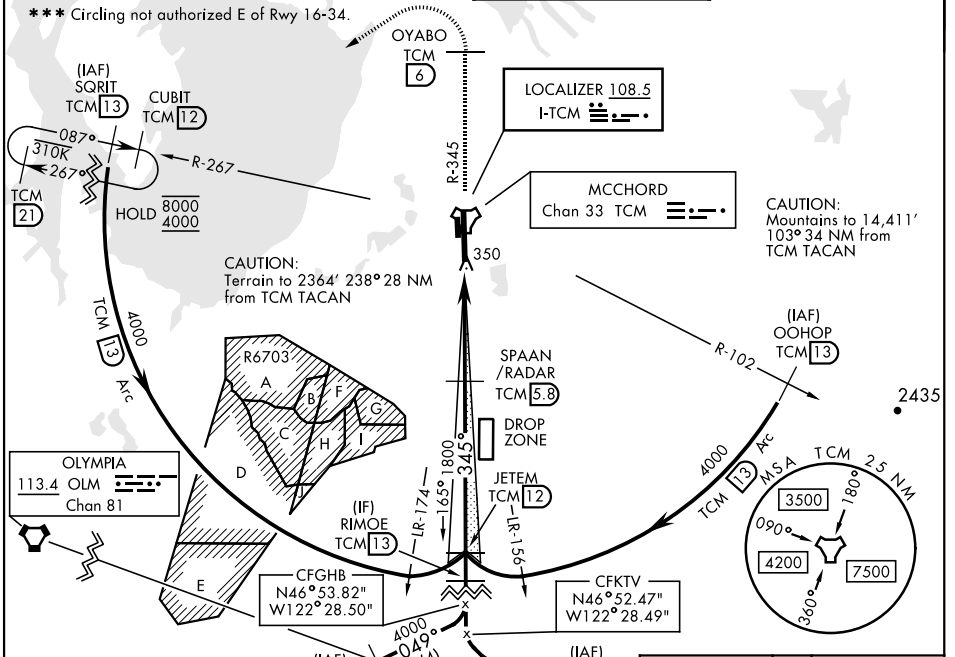
LOC I-TCM <b>108.5</b>	APCH CRS <b>345°</b>	Rwy Ldg <b>10,108</b>
		TDZE <b>322</b>
		Arprt Elev <b>322</b>

AL-414 [USAF]

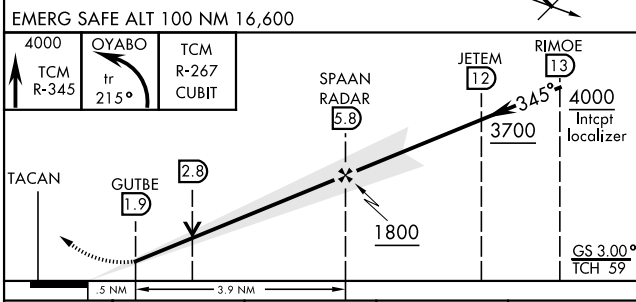
MCCHORD FLD (KTCM)

RADAR or DME required.		ALSF-2 	MISSED APPROACH: Climb to 4000 on TCM TACAN R-345 to OYABO, then turn left via 215° course to intercept TCM R-267 to CUBIT and hold, continue climb in hold to 4000. Cross OYABO at or above 3000.
* When ALS inop, increase RVR to 40, vis to 3/4 mile. ** When ALS inop, increase CAT AB RVR to 55, vis to 1 mile, CAT CD vis to 1 1/2 miles.			

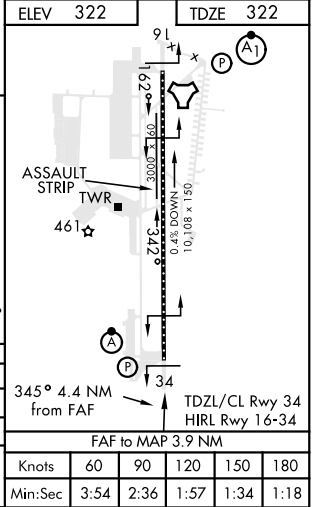
ATIS <b>135.825 270.1</b>	SEATTLE APP CON <b>126.5 377.15</b>	TOWER <b>124.8 259.3</b>	GND CON <b>118.175 279.65</b>
------------------------------	----------------------------------------	-----------------------------	----------------------------------



ELEV 322	TDZE 322
----------	----------



CATEGORY	A	B	C	D
S-ILS 34 *	522/18		200 (200-1/2)	
S-LOC 34 **	820/24	498 (500-1/2)	820/50	498 (500-1)
CIRCLING ***	940-1	618 (700-1)	940-1 1/4 618 (700-1 1/4)	940-2 618 (700-2)



TACOMA, WASHINGTON

47°08'N-122°29'W

MCCHORD FLD (KTCM)

Amtd 3 10SEP20

# ILS or LOC RWY 34

NW-1, 16 JUN 2022 to 14 JUL 2022

NW-1, 16 JUN 2022 to 14 JUL 2022