

# OLYMPIC-FOUR DEPARTURE

AL-414 [USAF]

MCCORD FLD (KTCM)

TACOMA, WASHINGTON

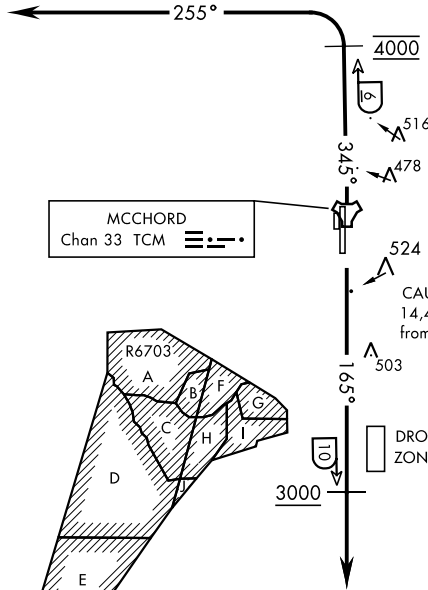
ATIS  
 135.825 270.1  
 GND CON  
 118.175 279.65  
 TOWER  
 124.8 259.3  
 SEATTLE DEP CON  
 126.5 377.15

If unable to make ATC charted crossing restrictions advise ATC prior to departure.

Maximum 250 KIAS

SEATTLE  
 116.8 SEA  
 Chan 115

L-1



CAUTION: Mountains to 14,411 ft 103° 34 NM from McCord.

① 2270' from Rwy 34

OLYMPIA  
 113.4 OLM  
 Chan 81

L-1

MCCORD  
 Chan 33 TCM

NW-1, 16 JUN 2022 to 14 JUL 2022

NW-1, 16 JUN 2022 to 14 JUL 2022

## RADAR REQUIRED



### DEPARTURE ROUTE DESCRIPTION

TAKEOFF RWY 16: Climb on track of 165° to cross TCM TACAN 10 DME at or above 3000. Expect radar vectors within TCM 8 DME. Maintain ATC assigned altitude.

TAKEOFF RWY 34: Climb on track 345° to cross TCM TACAN 6 DME at 4000. Then turn left tracking 255° to expect radar vectors. Maintain ATC assigned altitude.

# OLYMPIC-FOUR DEPARTURE

TACOMA, WASHINGTON  
 MCCORD FLD (KTCM)