

RNAV (GPS) RWY 34

APCH CRS	Rwy ldg	10,108
345°	TDZE	322
	Arprt Elev	322

AL-414 [USAF]

MCCHORD FLD (KTCM)

RADAR required.
 * When ALS inop, increase CAT AB RVR to 55, vis to 1 mile; CAT CDE vis to 1 3/8 miles.



MISSED APPROACH: Climb to 4000 direct ZOSAV and hold, continue climb in hold to 4000.

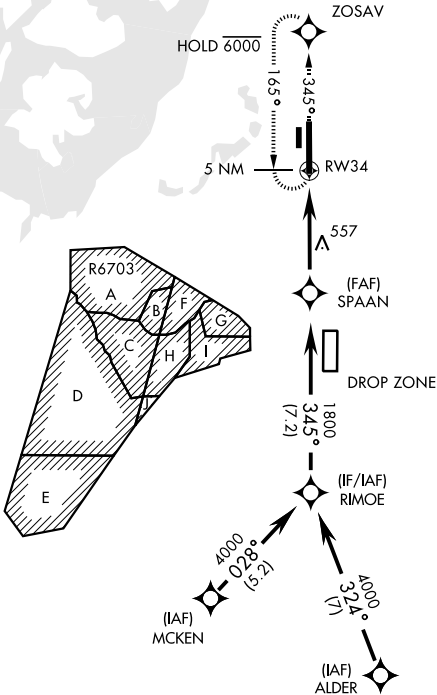
ATIS
135.825 270.1

SEATTLE APP CON
126.5 377.15

TOWER
124.8 259.3

GND CON
118.175 279.65

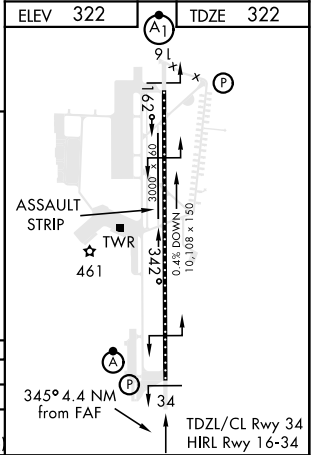
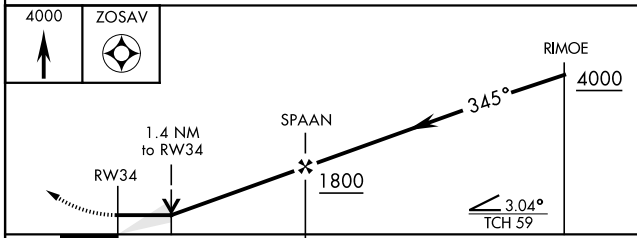
DME/DME RNP-0.3 NA
 ** Circling not authorized E of rwy 16-34.



NW-1, 16 JUN 2022 to 14 JUL 2022

NW-1, 16 JUN 2022 to 14 JUL 2022

EMERG SAFE ALT 100 NM 16,600



CATEGORY	A	B	C	D	E
LNAV MDA *	820/24	498 (500-1/2)	820/50	498 (500-1)	
CIRCLING **	940-1	618 (700-1)	940-1 3/4 618 (700-1 3/4)	940-2 618 (700-2)	1020-2 1/2 698 (700-2 1/2)

RNAV (GPS) RWY 34