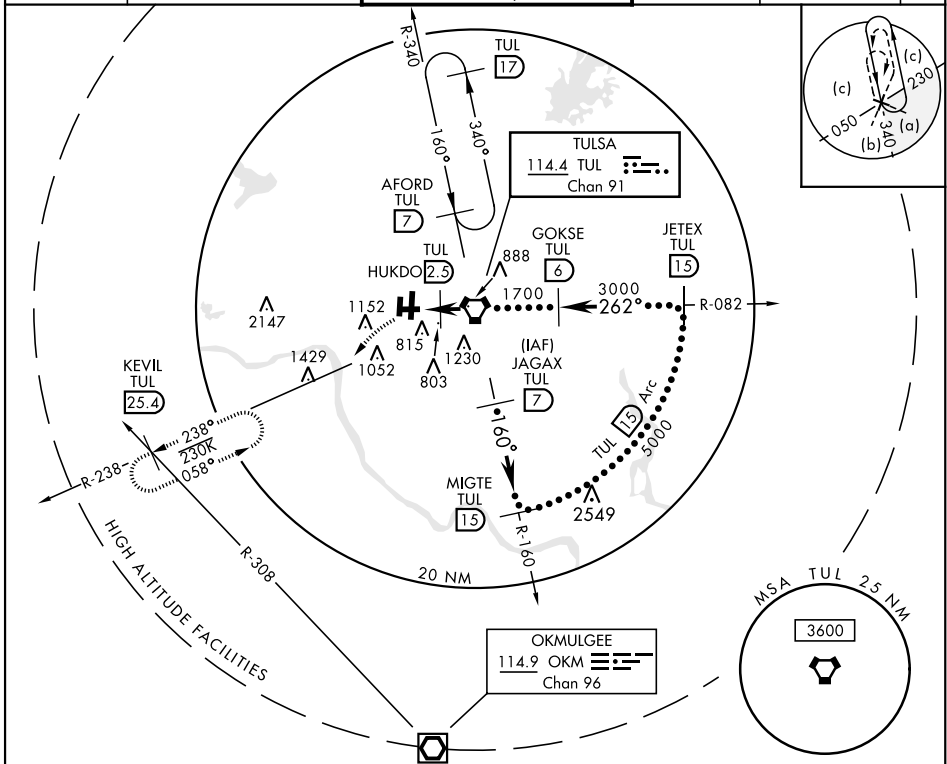


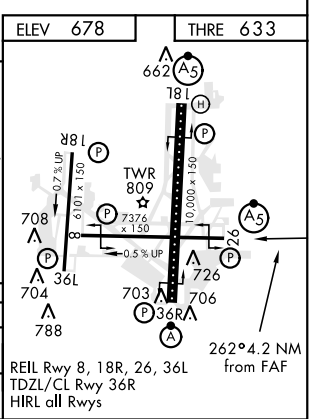
# HI-VOR/DME or TACAN RWY 26

VORTAC TUL <b>114.4</b> Chan <b>91</b>	APCH CRS <b>262°</b>	Rwy ldg THRE <b>633</b> Arpt Elev <b>678</b>	AL-432 [USAF]	TULSA INTL (KTUL)
*When ALS inop, increase CAT CDE vis to 1 1/4 miles. **CAT E circling not authorized S of Rwy 8-26.			MALSR <b>(A5)</b>	MISSED APPROACH: Climbing left turn to 2600 via heading 220° and TUL VORTAC R-238 to KEVIL INT/TUL 25.4 DME and hold.

ATIS <b>124.9 377.2</b>	APP CON <b>124.0 338.3</b> 175°-354° <b>119.1 351.8</b> 355°-174°	TOWER <b>121.2 310.8</b> Rwy 18L-36R, 8-26 <b>118.7 257.8</b> Rwy 18R-36L	GND CON <b>121.9 348.6</b>	CLNC DEL <b>134.05 284.7</b>	ASR
----------------------------	---	---	-------------------------------	---------------------------------	-----



EMERG SAFE ALT 100 NM 4500			ELEV 678	THRE 633
hdg 220°	TUL R-238	KEVIL TUL (25.4)		
CATEGORY	C	D	E	
S-26*	1060-3/4	427	(400-3/4)	
CIRCLING**	1140-1 1/2 462 (500-1 1/2)	1300-2 622 (700-2)	1300-2 1/4 622 (700-2 1/4)	



# HI-VOR/DME or TACAN RWY 26

SC-1, 16 JUN 2022 to 14 JUL 2022

SC-1, 16 JUN 2022 to 14 JUL 2022