


WAAS CH 86245 W13A	APP CRS 128°	Rwy ldg 9111 TDZE 115 Apt Elev 115
--	------------------------	---

RNAV (GPS) RWY 13

VICTORIA RGNL (VCT)

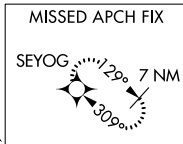
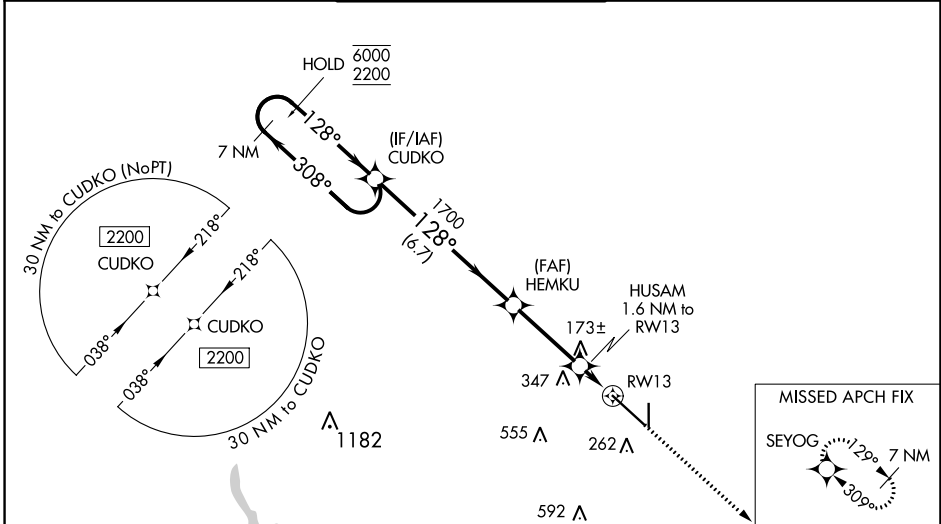
RNP APCH-GPS.

⚠ For uncompensated Baro-VNAV systems, LNAV/VNAV NA below -15°C or above 54°C. For inop ALS, increase LPV Cat E and LNAV/VNAV all Cats visibility to 3/4 SM and LNAV Cat E visibility to 1 SM.

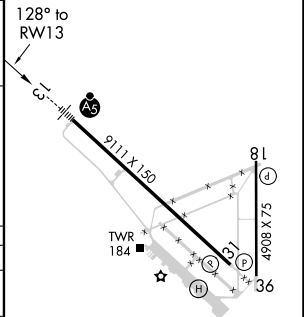
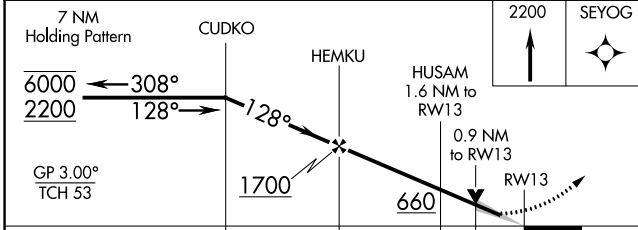
MALSR 

MISSED APPROACH: Climb to 2200 direct SEYOG and hold.

ATIS 119.025	HOUSTON CENTER 135.05 353.6	VICTORIA TOWER * 126.075 (CTAF) 257.95	GND CON 120.525 239.25	UNICOM 122.7
------------------------	---------------------------------------	--	----------------------------------	------------------------



ELEV 115	D TDZE 115
----------	-------------------



CATEGORY	A	B	C	D	E
LPV DA		315-1/2	200 (200-1/2)		
LNAV/VNAV DA		365-1/2	250 (300-1/2)		
LNAV MDA		440-1/2	325 (400-1/2)		
C CIRCLING	580-1	465 (500-1)	820-2 705 (800-2)	880-2 1/2 765 (800-2 1/2)	NA

MIRL Rwy 18-36
REIL Rwy 18 and 36
HIRL Rwy 13-31 **⓪**

SC-5, 16 JUN 2022 to 14 JUL 2022

SC-5, 16 JUN 2022 to 14 JUL 2022