

VOR/DME VCT	APP CRS	Rwy Idg	9111
109.0	127°	TDZE	115
Chan 27		Apt Elev	115

# VOR RWY 13

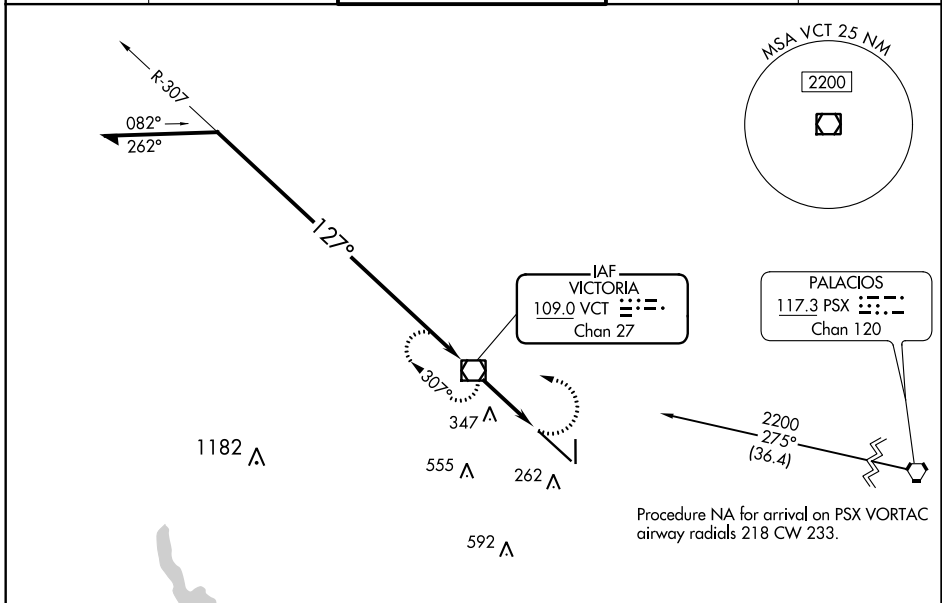
VICTORIA RGNL (VCT)

For inop ALS, increase Cat C/D/E visibility to 1 3/8 SM.

MALSR

MISSED APPROACH: Climbing left turn to 2200 direct VCT VOR/DME and hold, continue climb-in-hold to 2200.

ATIS 119.025	HOUSTON CENTER 135.05 353.6	VICTORIA TOWER ★ 126.075 (CTAF) 0 257.95	GND CON 120.525 239.25	UNICOM 122.7
-----------------	--------------------------------	---	---------------------------	-----------------



ELEV 115 TDZE 115

127° 3.2 NM from FAF

2111 X 130  
TWR 184  
4908 X 75  
36

MIRL Rwy 18-36  
REIL Rwy 18 and 36  
HIRL Rwy 13-31

FAF to MAP 3.2 NM

Knots	60	90	120	150	180
Min:Sec	3:12	2:08	1:36	1:17	1:04

CATEGORY	A	B	C	D	E
S-13	600-1/2	485 (500-1/2)	600-1	485 (500-1)	
CIRCLING	600-1	485 (500-1)	820-2 705 (800-2)	880-2 1/2 765 (800-2 1/2)	NA

SC-5, 16 JUN 2022 to 14 JUL 2022

SC-5, 16 JUN 2022 to 14 JUL 2022