


WAAS CH <b>90299</b> <b>W20A</b>	APP CRS <b>196°</b>	Rwy Idg TDZE <b>6527</b> <b>1194</b> Apt Elev <b>1194</b>
--	------------------------	--

# RNAV (GPS) RWY 20

WALLA WALLA RGNL (ALW)

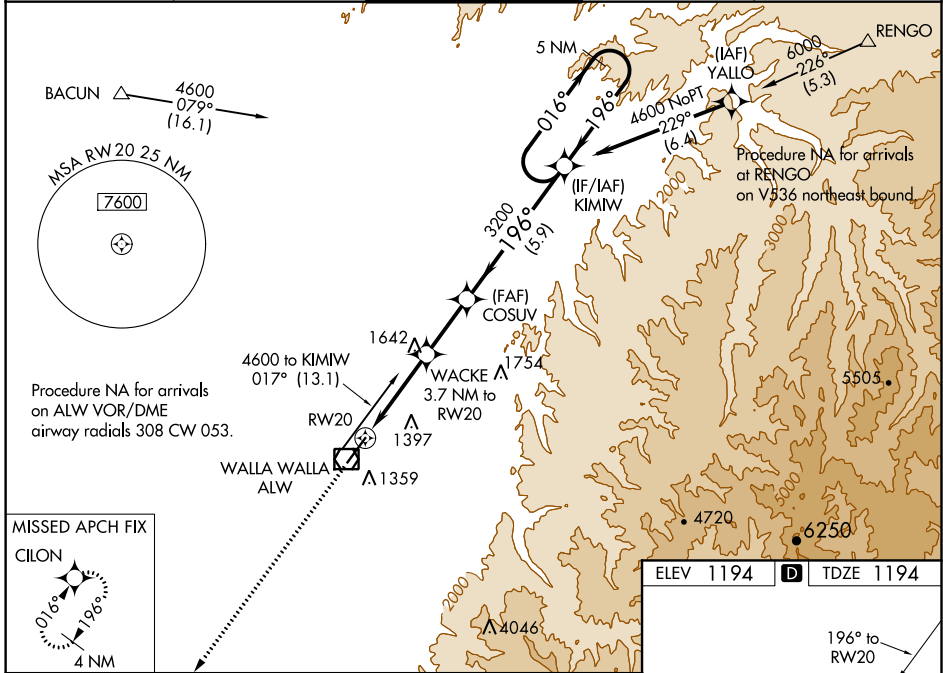
**⚠** For uncompensated Baro-VNAV systems, LNAV/VNAV NA below -11°C (13°F) or above 54°C (130°F). DME/DME RNP-0.3 NA. When local altimeter setting not received, use Pendleton altimeter setting and increase all DAs/MDAs 120 feet and increase LPV RVR to 2800, LNAV/VNAV visibilities to 1½ miles, and LNAV Cat A RVR to 6000. VDP and Baro-VNAV NA when using Pendleton altimeter setting. For inoperative MALSR when using Pendleton altimeter setting, increase LPV all Cats visibility to 1 and LNAV Cat A to 1¼. # RVR 1800 authorized with use of FD or AP or HUD to DA, NA when using Pendleton altimeter setting.

MALSR




MISSED APPROACH:  
Climb to 4000 direct  
CILON and hold.

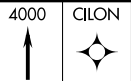
ASOS <b>135.875</b>	CHINOOK APP CON ★ <b>133.15 379.15</b>	WALLA WALLA TOWER ★ <b>118.5 (CTAF) 289.4</b>	GND CON <b>121.6 289.4</b>	UNICOM <b>122.95</b>
------------------------	---	--	-------------------------------	-------------------------



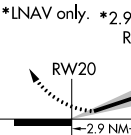
MISSED APCH FIX  
CILON



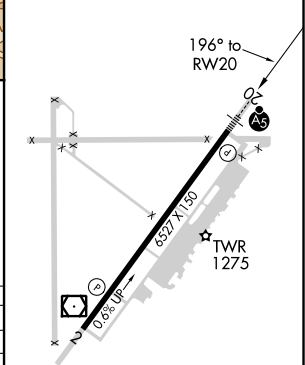
4000 CILON



\*LNAV only. \*2.9 NM to RW20



ELEV 1194	TDZE 1194
-----------	-----------



4000	CILON	WACKE 3.7 NM to RW20	COSUV 3200	KIMI W 5 NM Holding Pattern	4600
*LNAV only.	*2.9 NM to RW20	2420*	3200	196°	196°
RW20		2.9 NM	0.8 NM	2.4 NM	5.9 NM

CATEGORY	A	B	C	D
LPV DA#		1394/24	200 (200-½)	
LNAV/VNAV DA		1773-1½	579 (600-1½)	
LNAV MDA	2160/40 966 (1000-¾)	2160/55 966 (1000-1)	2160-2½	966 (1000-2½)
CIRCLING	2160-1¼ 966 (1000-1¼)	2160-1½ 966 (1000-1½)	2160-3 966 (1000-3)	2300-3 1106 (1200-3)

REIL Rwy 20  
HIRL Rwy 2-20

NW-1, 16 JUN 2022 to 14 JUL 2022

NW-1, 16 JUN 2022 to 14 JUL 2022