

VOR/DME ALW 116.4 Chan 111	APP CRS 197°	Rwy Idg 6527 TDZE 1194 Apt Elev 1194
---	------------------------	---

VOR RWY 20

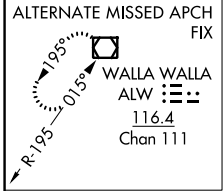
WALLA WALLA RGNL (ALW)

ADF required. VDP NA with Pendleton altimeter setting. When local altimeter setting not received, use Pendleton altimeter setting and increase all MDA 120 feet. Increase S-20 visibility Cat B ¼ mile, Cat C and D ½ mile. Increase JOSBO fix minimums S-20 visibility Cat C and D ¼ mile, Circling visibility Cat A and C ¼ mile, and Cat B ½ mile.

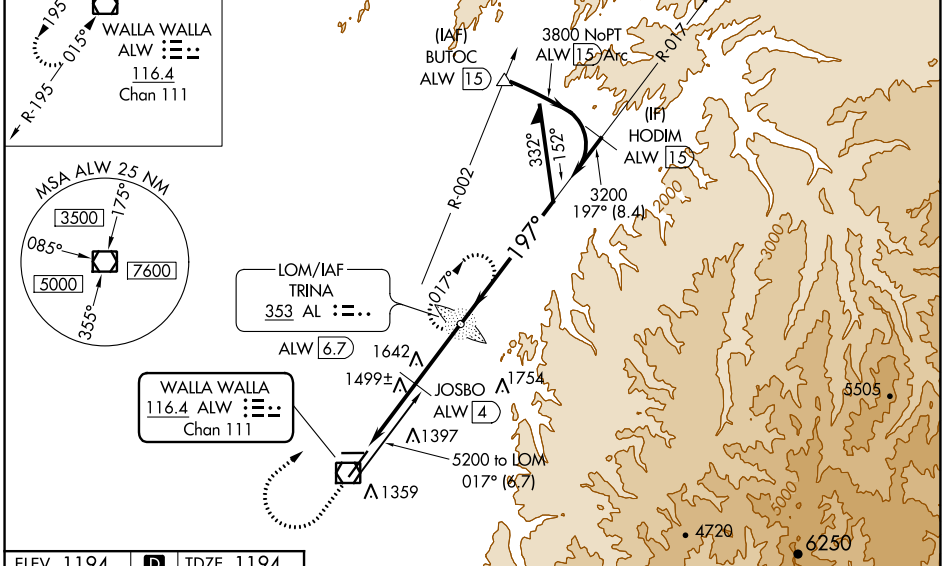
MALSRL

MISSED APPROACH: Climb to 2300 then climbing right turn to 4000 direct TRINA LOM and hold.

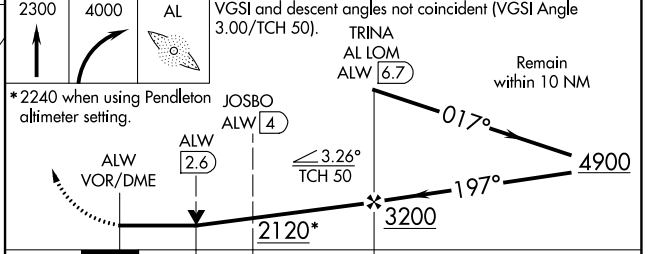
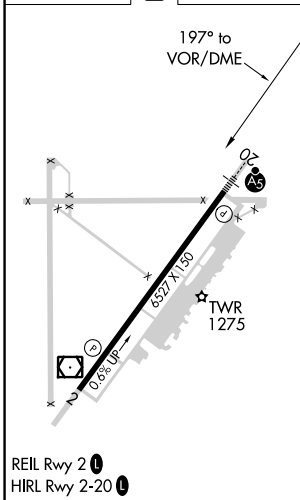
ASOS 135,875	CHINOOK APP CON ★ 133.15 379.15	WALLA WALLA TOWER ★ 118.5 (CTAF) 289.4	GND CON 121.6 289.4	UNICOM 122.95
------------------------	---	--	-------------------------------	-------------------------



ADF OR DME REQUIRED



ELEV 1194	D	TDZE 1194
-----------	----------	-----------



CATEGORY	A	B	C	D
S-20	2120/40	926 (1000-¾)	2120-2	926 (1000-2)
C CIRCLING	2120-1¼	926 (1000-1¼)	2120-3 926 (1000-3)	2240-3 1046 (1100-3)
JOSBO FIX MINIMUMS (DME REQUIRED)				
S-20	1760/24	566 (600-½)	1760-1¼	566 (600-1¼)
C CIRCLING	1760-1 566 (600-1)	1820-1 626 (700-1)	2080-2¾ 886 (900-2¾)	2240-3 1046 (1100-3)

NW-1, 16 JUN 2022 to 14 JUL 2022

NW-1, 16 JUN 2022 to 14 JUL 2022