

NUMMY THREE ARRIVAL

WASHINGTON, DC

NE-3, 16 JUN 2022 to 14 JUL 2022

ARRIVAL ROUTE DESCRIPTION

BUCKO TRANSITION (BUCKO.NUMMY3): From over BUCKO on ESL R-282 to ESL VOR/DME, then on ESL R-103 to DRUZZ, then on AML R-297 to AML VOR/DME.

Landing DCA Rwy 1, 4, 33, ADW Rwys 1L, 1R, and DAA: From over AML VOR/DME on AML VOR/DME R-130 to cross NUMMY at 6000, then on heading 187°, expect radar vectors to final approach course.

Landing DCA Rwys 15, 19, 22 and ADW Rwys 19L, 19R: Depart AML VOR/DME on heading 070°, expect radar vectors to final approach course.

POTOMAC APP CON
118.675 323.175
DCA D-ATIS 132.65
KADW D-ATIS
133.675 251.05
*KDA A ATIS
128.175

MORGANTOWN
111.6 MGW
Chan 53

KESSEL
110.8 ESL
Chan 45
N39°13.53'-W78°59.37'

MARTINSBURG
112.1 MRB
Chan 58

ARMEL
113.5 AML
Chan 82
N38°56.08'-W77°28.00'

WEWIL
N39°06.10'
W78°06.86'
14000

SEPII
N39°00.55'
W77°45.23'
11000

ALWYZ
N38°59.01'
W77°39.28'
6000

FORGT
N39°02.12'
W77°51.32'

NEWR
N39°04.22'
W77°59.50'
12000

DRUZZ
N39°09.80'
W78°21.48'
15000

NUMMY
N38°47.03'
W77°09.57'
6000

ALWYZ
N38°59.01'
W77°39.28'
6000

FORGT
N39°02.12'
W77°51.32'

NEWR
N39°04.22'
W77°59.50'
12000

DRUZZ
N39°09.80'
W78°21.48'
15000

BUCKO
N39°17.63'
W79°49.50'
H-10-12
FL310

HONNIR
N39°14.78'
W79°14.15'
FL260

ELKINS
114.2 EKN
Chan 89

LINDEN
114.3 LDN
Chan 90

CASANOVA
116.3 CSN
Chan 110

ARMEL
113.5 AML
Chan 82

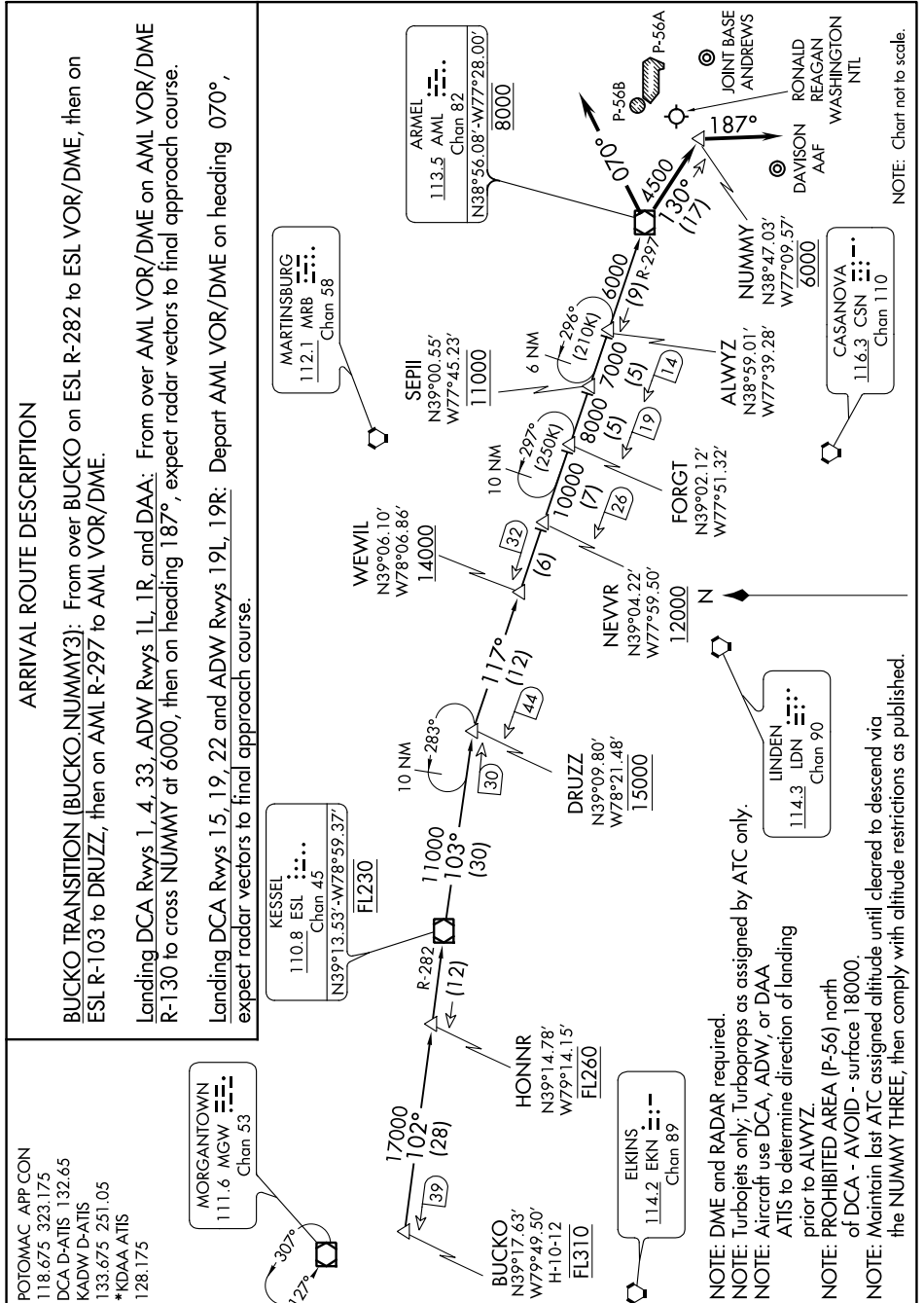
JOINT BASE ANDREWS

DAVISON AAF
RONALD REAGAN WASHINGTON NTL

NUMMY THREE ARRIVAL

WASHINGTON, DC

NE-3, 16 JUN 2022 to 14 JUL 2022



NOTE: Chart not to scale.