

TRUPS FOUR ARRIVAL (RNAV) Arrival Routes

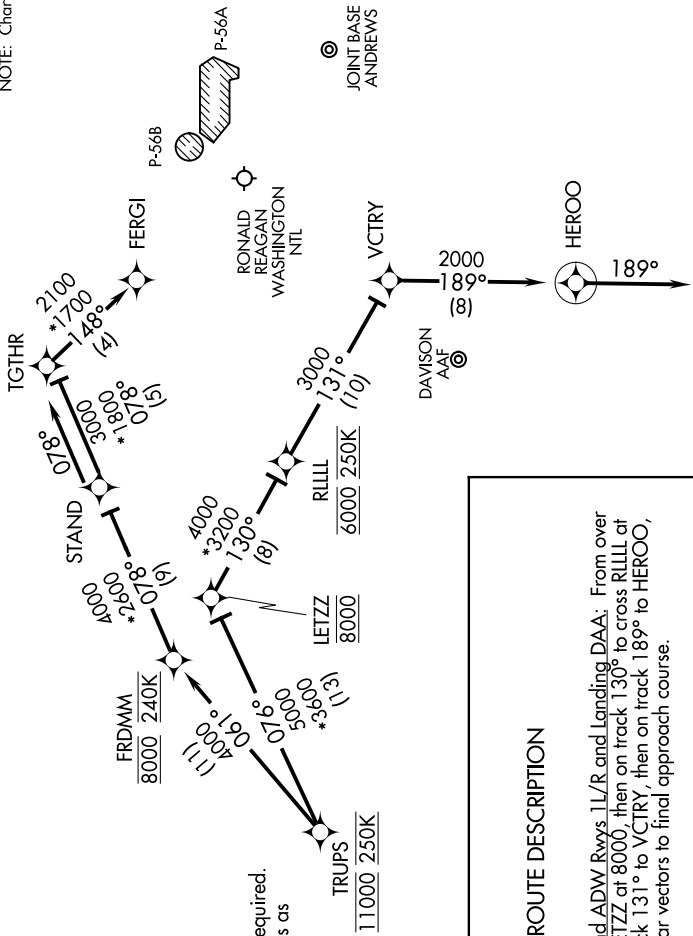
WASHINGTON, DC

NE-3, 16 JUN 2022 to 14 JUL 2022

POTOMAC APP CON
 118.675 323.175
 DCA D-ATIS
 132.65
 KADW D-ATIS
 133.675 251.05
 *KAAA ATIS
 128.175

NOTE: RADAR required.
 NOTE: RNAV 1.
 NOTE: DME/DME/IRU or GPS required.
 NOTE: Turboprops only; turboprops as assigned by ATC only.

NOTE: Chart not to scale.



ARRIVAL ROUTE DESCRIPTION

Landing DCA Rwy 1, 4, 33, and ADW Rwys 1L/R and Landing DAA: From over TRUPS on track 076° to cross LETZZ at 8000, then on track 130° to cross RILL at 6000 and at 250K, then on track 131° to VCTRY, then on track 189° to HEROO, then on track 189°. Expect radar vectors to final approach course.

Landing DCA Rwys 15, 19, 22: From over TRUPS on track 061° to cross FRDMM at 8000 and 240K, then on track 078° to STAND, then on track 078° to TGTTHR, then on track 148° to FERGI. Expect LDA/DME Rwy 19, RNAV/RNP Rwy 19, RIVER VISUAL Rwy 19 or radar vectors to final approach course.

Landing ADW Rwys 19L/R: From over TRUPS on track 061° to cross FRDMM at 8000 and at 240K, then on track 078° to STAND, then on track 078°. Expect radar vectors to final approach course.

NOTE: Prohibited area (P-56) north of DCA-avoid surface to FL180.

NOTE: Maintain last assigned altitude until cleared to "descend via" the TRUPS4. ARTCC will issue landing assignment (north or south) and Potomac TRACON will issue runway assignments.

TRUPS FOUR ARRIVAL (RNAV) Arrival Routes

WASHINGTON, DC

NE-3, 16 JUN 2022 to 14 JUL 2022