

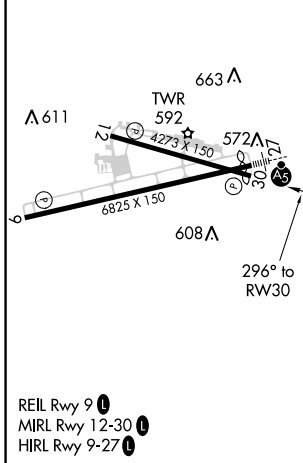
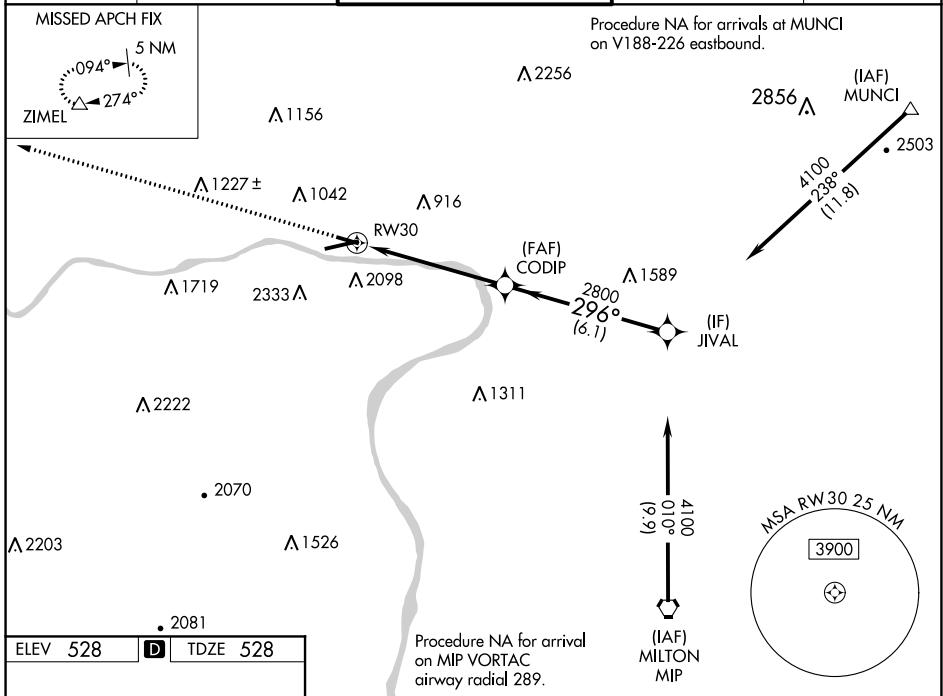
WAAS CH 93724 W30A	APP CRS 296°	Rwy Idg TDZE 528 Apt Elev 528	4273
--	------------------------	---	-------------

RNAV (GPS) RWY 30

WILLIAMSPORT RGNL (IPT)

 -14°C	DME/DME RNP-0.3 NA. Helicopter visibility reduction below 1 SM NA. Circling NA south of Rwy 9 and southwest of Rwy 30. Night landing: Rwy 12, 30 NA.	MISSED APPROACH: Climb to 4500 direct ZIMEL and hold, continue climb-in-hold to 4500.
-------------------	--	---

ASOS 125.225	NEW YORK CENTER 124.9	WILLIAMSPORT TOWER ★ 119.1 (CTAF) 257.8	GND CON 121.9	UNICOM 122.95
------------------------	---------------------------------	---	-------------------------	-------------------------



NE-4, 16 JUN 2022 to 14 JUL 2022

NE-4, 16 JUN 2022 to 14 JUL 2022