

CHERRY POINT, NORTH CAROLINA

# RNAV (GPS) RWY 14L

WAAS Chan <b>41117</b> <b>W14A</b>	APCH CRS <b>144°</b>	Rwy ldg TDZE Arprt Elev <b>8979</b> <b>26</b> <b>29</b>
--	-------------------------	--

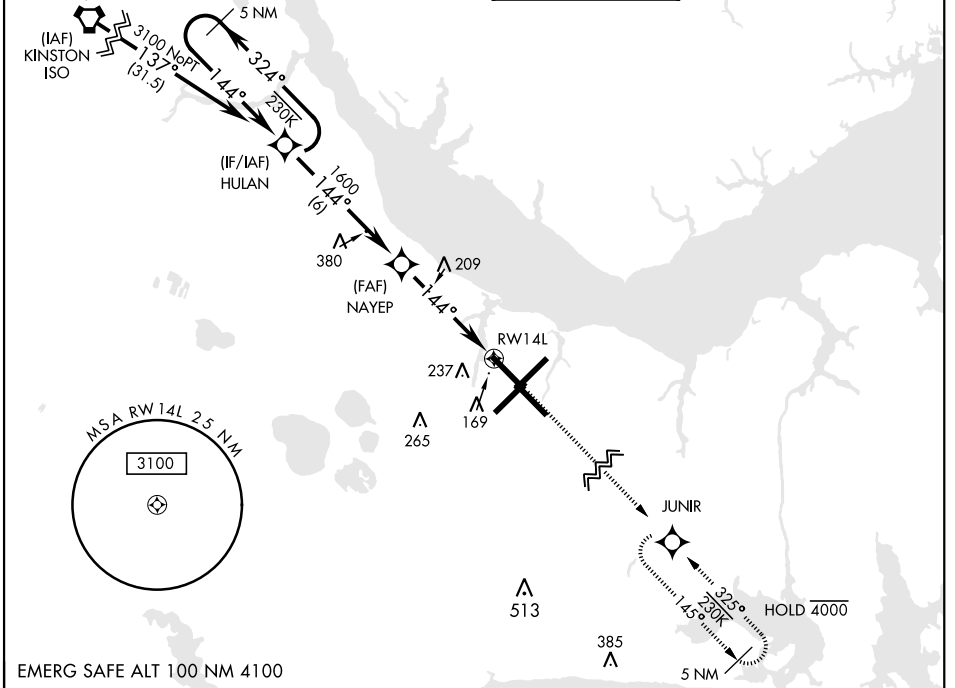
AL-471 [USN] CHERRY POINT MCAS (CUNNINGHAM FLD) (KNKT)

RNP APCH

▼ For uncompensated Baro-VNAV systems, LNAV/VNAV NA below -15°C (5°F) or above 54°C (129°F).

MISSED APPROACH: Climb to 3100 direct JUNIR and hold.

ATIS <b>127.475</b> <b>244.875</b>	APP CON <b>119.75 (E)</b> <b>360.775</b> (abv 2600') <b>132.575 (E)</b> <b>299.6</b> (at/blw 2600') <b>119.35 (W)</b> <b>377.175 (N)</b> <b>124.1</b> <b>268.7</b>	TOWER <b>121.3</b> <b>340.2</b>	GND CON <b>128.625</b> <b>239.025</b>	CLNC DEL <b>125.95</b> <b>316.125</b>	ASR/ PAR
--	---	------------------------------------	---	---	-------------



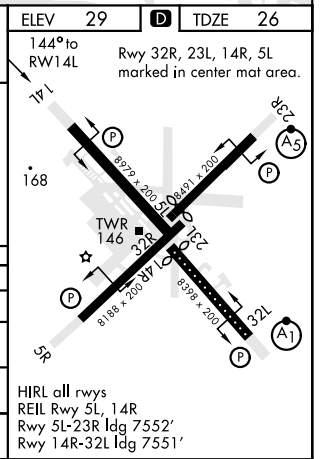
5 NM Holding Pattern

VGSI and RNAV glidepath not coincident (VGSI Angle 3.00/TCH 71).

HULAN NAYEP RWY 14L

GP 3.04° TCH 55

CATEGORY	A	B	C	D
LPV DA	226-¾		200 (200-¾)	
LNAV/VNAV DA	302-7/8 276 (300-7/8)	313-7/8 287 (300-7/8)	321-7/8 295 (300-7/8)	332-7/8 306 (400-7/8)
LNAV MDA	500-1	474 (500-1)	500-1¾	474 (500-1¾)
CIRCLING	580-1	551 (600-1)	600-1½ 571 (600-1½)	600-2 571 (600-2)



CHERRY POINT, NORTH CAROLINA

34° 54'N-76° 53'W

CHERRY POINT MCAS (CUNNINGHAM FLD) (KNKT)

Amdt 4 09SEP21

# RNAV (GPS) RWY 14L

SE-2, 16 JUN 2022 to 14 JUL 2022

SE-2, 16 JUN 2022 to 14 JUL 2022