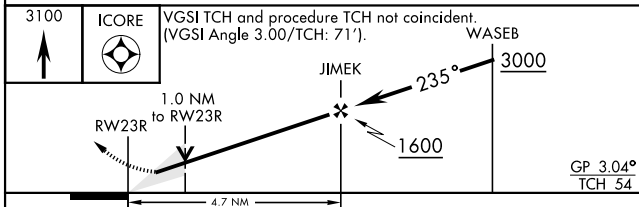
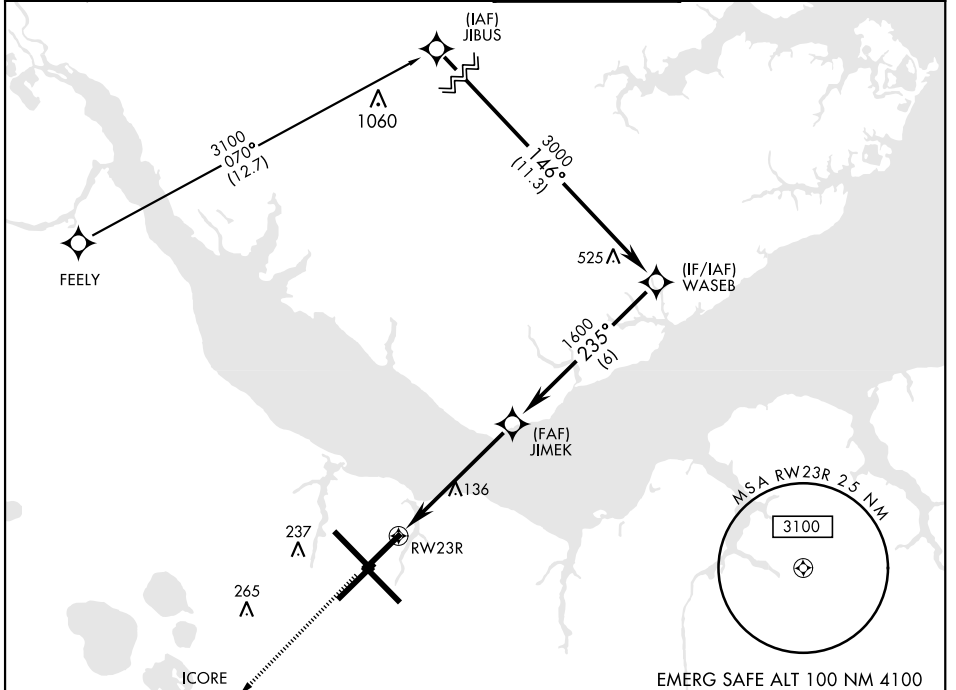


RNAV (GPS) RWY 23R

WAAS Chan 51523 W23A	APCH CRS 235°	Rwy ldg TDZE Arprt Elev 7552 23 29	AL-471 [USN] CHERRY POINT MCAS (CUNNINGHAM FLD) (KNKT)
--	-------------------------	--	--

RNP APCH ▼ * When ALS inop, increase vis to ¾ mile. ** When ALS inop, increase to 1 mile.	MALSR 	Missed Approach: Climb to 3100 direct ICORE and hold. Continue climb in hold to 3100.
---	-----------	--

ATIS 127.475 244.875	(E) 119.75 (E) 132.575 (W) 119.35	APP CON 360.775 (abv 2600') 299.6 (at/blw 2600') 377.175 (N) 124.1 268.7	TOWER 121.3 340.2	GND CON 128.625 239.025	CLNC DEL 125.95 316.125	ASR/ PAR
--	--	--	------------------------------------	---	---	-------------

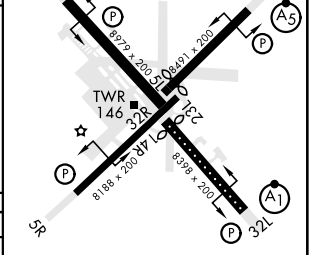


CATEGORY	A	B	C	D
LPV*	223-½		200	(200-½)
LNAV MDA**	400-½	377 (400-½)	400-⅝	377 (400-⅝)
Ⓞ CIRCLING	580-1	551 (600-1)	600-1½ 571 (600-1½)	600-2 571 (600-2)

EMERG SAFE ALT 100 NM 4100

ELEV 29	TDZE 23
---------	---------

Rwy 32R, 23L, 14R, 5L marked in center mat area. 235° to RWY23R



HIRL all Rwy
REIL Rwy 5L and 14R
Rwy 5L-23R ldg 7552',
14R-32L ldg 7551'

RNAV (GPS) RWY 23R

SE-2, 16 JUN 2022 to 14 JUL 2022

SE-2, 16 JUN 2022 to 14 JUL 2022