


# RNAV (GPS) RWY 32L

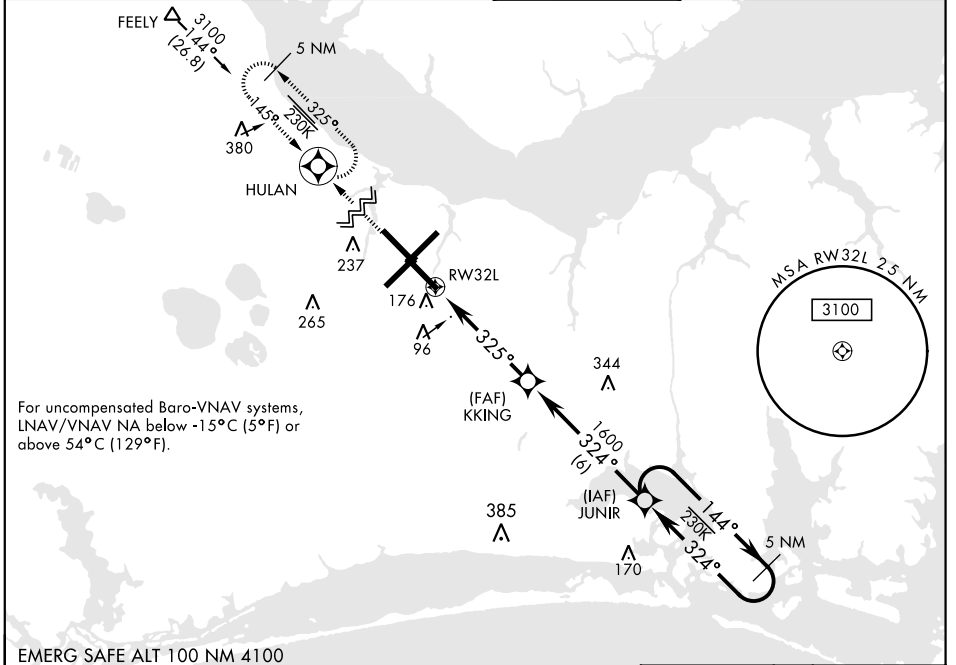
WAAS Chan <b>54304</b> <b>W32A</b>	APCH CRS <b>325°</b>	Rwy ldg TDZE <b>26</b> Arprt Elev <b>29</b>	<b>7551</b>
--	-------------------------	---	-------------

AL-471 [USN] CHERRY POINT MCAS (CUNNINGHAM FLD) (KNKT)

RNP APCH  
 ▼ \*When ALS inop, increase vis to 3/4 mile.  
 \*\*When ALS inop, increase vis to 1 1/8 mile.  
 \*\*\*When ALS inop, increase CAT AB vis to 1 mile,  
 CAT CD vis to 1 3/8 miles.

ALSF-1  
  
 MISSED APPROACH: Climb to 3100 direct HULAN and hold.

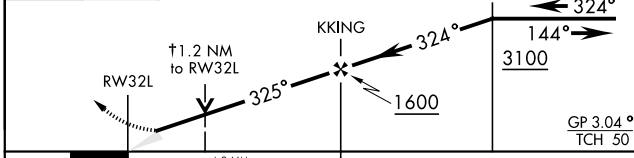
ATIS <b>127.475</b> <b>244.875</b>	CHERRY POINT APP CON (E) <b>119.75</b> <b>360.775</b> (abv 2600') (E) <b>132.575</b> <b>299.6</b> (at/blw 2600') (W) <b>119.35</b> <b>377.175</b> (N) <b>124.1</b> <b>268.7</b>	CHERRY POINT TOWER <b>121.3</b> <b>340.2</b>	GND CON <b>128.625</b> <b>239.025</b>	CLNC DEL <b>125.95</b> <b>316.125</b>	ASR/ PAR
--	--	---	---	---	-------------



For uncompensated Baro-VNAV systems, LNAV/VNAV NA below -15°C (5°F) or above 54°C (129°F).

EMERG SAFE ALT 100 NM 4100

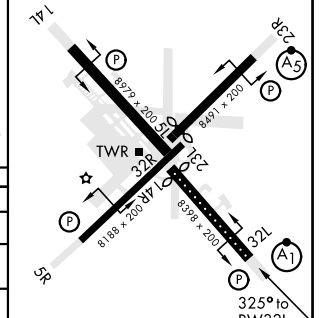
3100 HULAN VGSI and RNAV glidepath no coincident.  
 ↑ LNAV only



CATEGORY	A	B	C	D
LPV DA*		226-1/2	200	(200-1/2)
LNAV/VNAV DA**		415-5/8	389	(400-3/8)
LNAV MDA***	480-1/2	454 (500-1/2)	480-7/8	454 (500-7/8)
CIRCLING	580-1	551 (600-1)	600-1 1/2 571 (600-1 1/2)	600-2 571 (600-2)

ELEV 29	<b>D</b>	TDZE 26
---------	----------	---------

Rwy 32R, 23L, 14R, 5L marked in center mat area.



HIRL all Rwy  
 REIL Rwy 5L and 14R  
 Rwy 5L-23R 7552', 14R-32L ldg 7551'

# RNAV (GPS) RWY 32L

SE-2, 16 JUN 2022 to 14 JUL 2022

SE-2, 16 JUN 2022 to 14 JUL 2022