

# RNAV (GPS) RWY 5R

WAAS Chan <b>71199</b> <b>W05A</b>	APCH CRS <b>054°</b>	Rwy Idg TDZE Arprt Elev	<b>8188</b> <b>27</b> <b>29</b>
--	-------------------------	-------------------------------	---------------------------------------

AL-471 [USN]

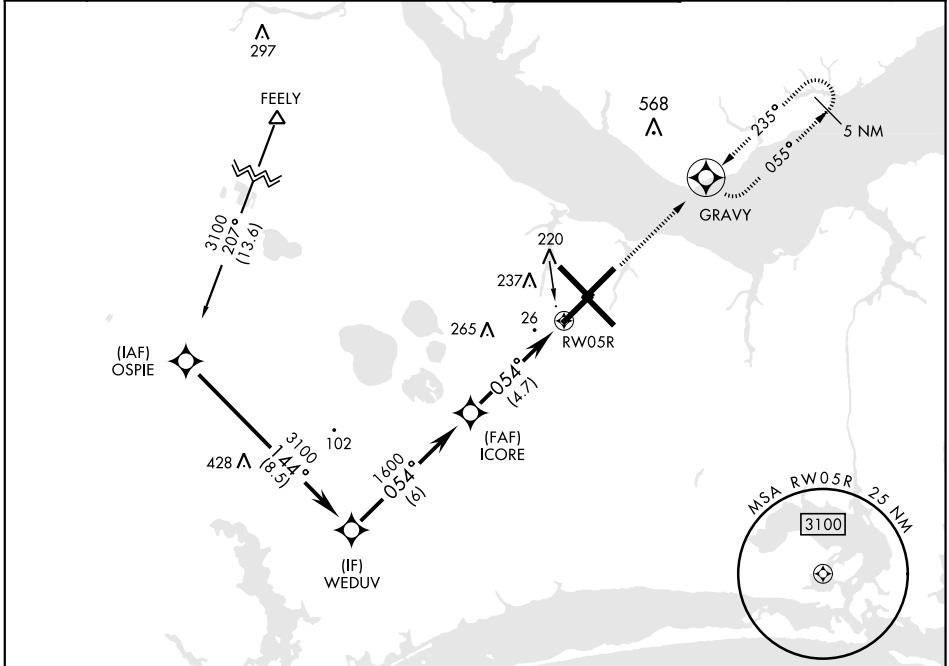
CHERRY POINT MCAS (CUNNINGHAM FLD) (KNKT)

RNP APCH

For uncompensated Baro-VNAV systems, LNAV/VNAV NA below -15°C (5°F) or above 54°C (129°F).

MISSED APPROACH: Climb to 3100 direct GRAVY and hold. Continue climb in hold to 3100.

ATIS <b>127.475</b> <b>244.875</b>	CHERRY POINT APP CON (E) <b>119.75</b> <b>360.775</b> (abv 2600') (E) <b>132.575</b> <b>299.6</b> (at/blw 2600') (W) <b>119.35</b> <b>377.175</b> (N) <b>124.1</b> <b>268.7</b>	CHERRY POINT TOWER <b>121.3</b> <b>340.2</b>	GND CON <b>128.625</b> <b>239.025</b>	CLNC DEL <b>125.95</b> <b>316.125</b>	ASR/PAR
--	--	---	---	---	---------



SE-2, 16 JUN 2022 to 14 JUL 2022

SE-2, 16 JUN 2022 to 14 JUL 2022

EMERG SAFE ALT 100 NM 4100

VGSI and RNAV glidepath not coincident.

3100	GRAVY
ELEV 29	TDZE 27

Rwy 32R, 23L, 14R, 5L marked in center mat area.

CATEGORY	A	B	C	D
LPV DA		227-¾	200	(200-¾)
LNAV/VNAV DA		398-1	371	(400-1)
LNAV MDA	500-1	473 (500-1)	500-1½	473 (500-1½)
<b>C</b> CIRCLING	580-1	551 (600-1)	600-1½ 571 (600-1½)	600-2 571 (600-2)

HIRL all Rwy  
REIL Rwy 5L and 14R  
Rwy 5L-23R Idg 7552',  
14R-32L Idg 7551'

# RNAV (GPS) RWY 5R