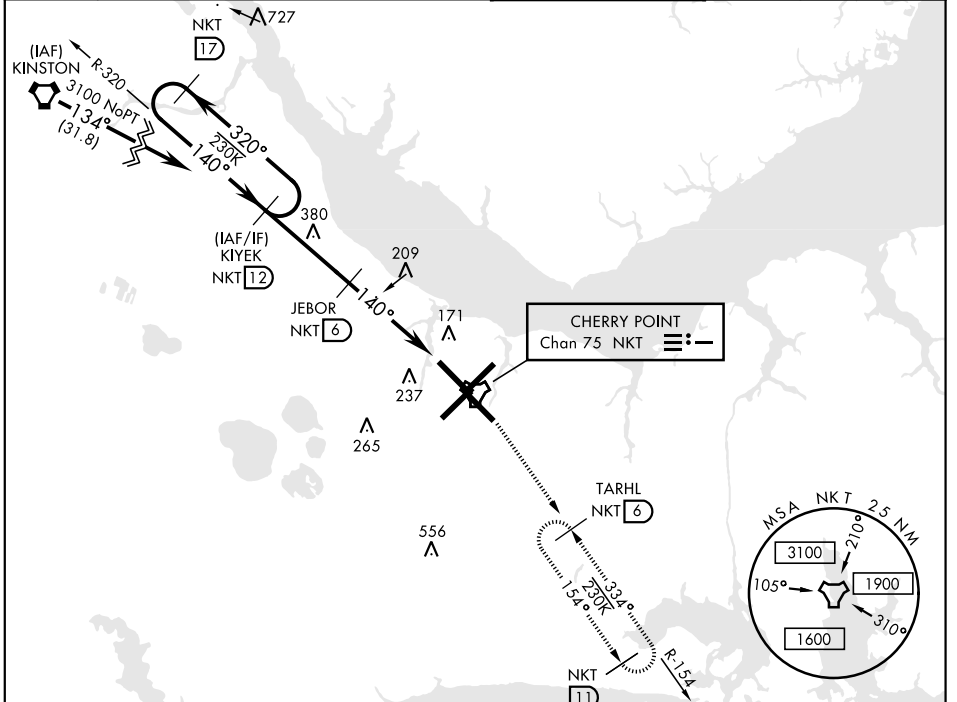


TACAN RWY 14L

TACAN NKT Chan 75	APCH CRS 140°	Rwy ldg TDZE Arprt Elev 8979 26 29	AL-471 [USN] CHERRY POINT MCAS (CUNNINGHAM FLD) (KNKT)
-----------------------------	-------------------------	--	--

MISSED APPROACH: Climb to 1600 direct NKT TACAN, then direct TARHL and hold.

ATIS 127.475 244.875	CHERRY POINT APP CON (E) 119.75 360.775 (abv 2600') (E) 132.575 299.6 (at/blw 2600') (W) 119.35 377.175 (N) 124.1 268.7	CHERRY POINT TOWER 121.3 340.2	GND CON 128.625 239.025	CLNC DEL 125.95 316.125	ASR/ PAR
--	--	---	---	---	-------------

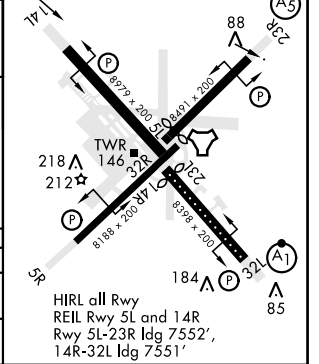
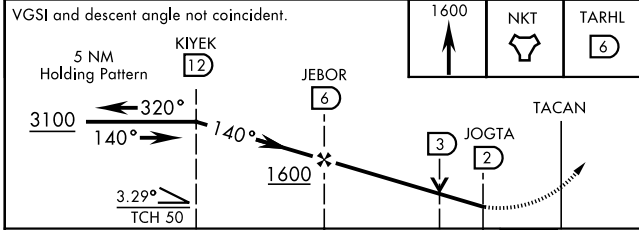


ELEV	29	TDZE	26
------	----	------	----

EMERG SAFE ALT 100 NM 4100

140° to TACAN

Rwy 32R, 23L, 14R, 5L marked in center mat area.



CATEGORY	A	B	C	D
S-14L	500-1 474 (500-1)		500-1½ 474 (500-1½)	
CIRCLING	580-1	551 (600-1)	600-1½ 571 (600-1½)	600-2 571 (600-2)

TACAN RWY 14L

SE-2, 16 JUN 2022 to 14 JUL 2022

SE-2, 16 JUN 2022 to 14 JUL 2022