

TACAN RWY 32L

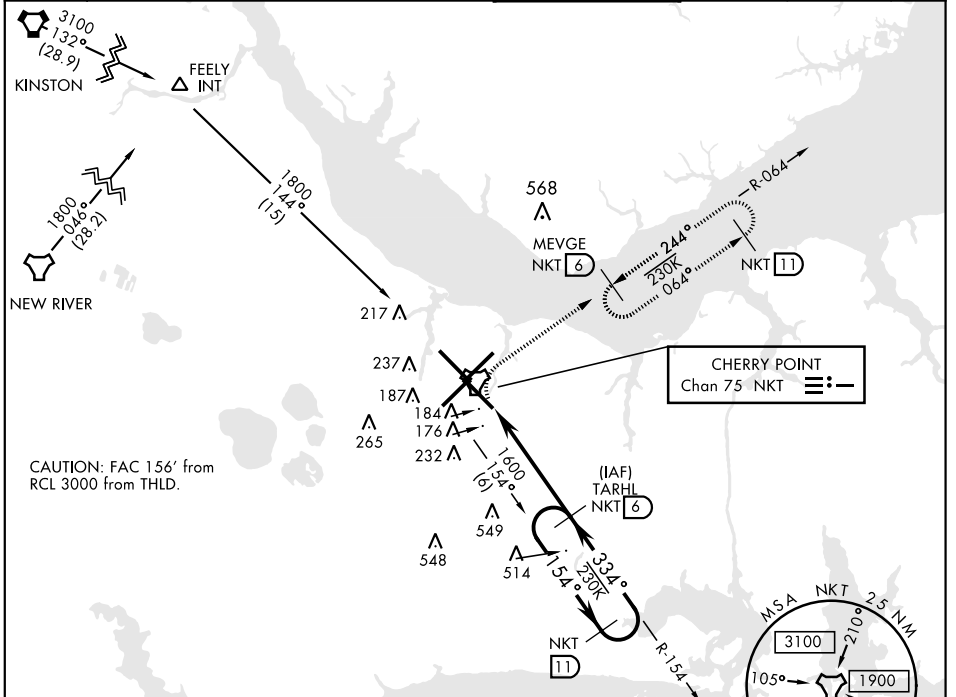
TACAN NKT Chan 75	APCH CRS 334°	Rwy ldg 7551 TDZE 26 Arprt Elev 29	AL-471 [USN]	CHERRY POINT MCAS (CUNNINGHAM FLD) (KNKT)
----------------------	------------------	---	--------------	---

▼ * When ALS inop, increase vis CAT AB to 1 mile, CAT CD to 1 3/8 miles.

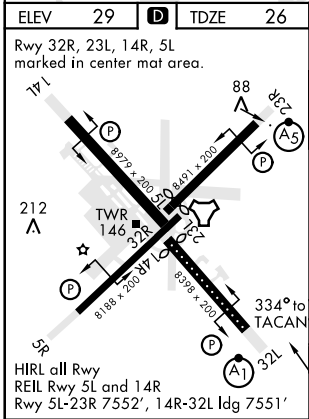
ALSF-1 (A1)

MISSED APPROACH: Climb on hdg 334°. At 500 climbing right turn to 1600 direct MEVGE and hold.

ATIS 127.475 244.875	CHERRY POINT APP CON (E) 119.75 360.775 (abv 2600') (E) 132.575 299.6 (at/blw 2600') (W) 119.35 377.175 (N) 124.1 268.7	CHERRY POINT TOWER 121.3 340.2	GND CON 128.625 239.025	CLNC DEL 125.95 316.125	ASR/PAR
----------------------------	--	-----------------------------------	-------------------------------	-------------------------------	---------



EMERG SAFE ALT 100 NM 4100



ELEV 29	TDZE 26			
Rwy 32R, 23L, 14R, 5L marked in center mat area.				
500	1600	MEVGE NKT 6		
hdg 334°				
TACAN	OSHEN 1.2	TARHL 6		
0.1	4.8 NM			
CATEGORY	A	B	C	D
S-32L *	480-1/2	454 (500-1/2)	480-7/8 454 (500-7/8)	600-2
CIRCLING	580-1	551 (600-1)	571 (600-1/2)	571 (600-2)

TACAN RWY 32L

SE-2, 16 JUN 2022 to 14 JUL 2022

SE-2, 16 JUN 2022 to 14 JUL 2022