

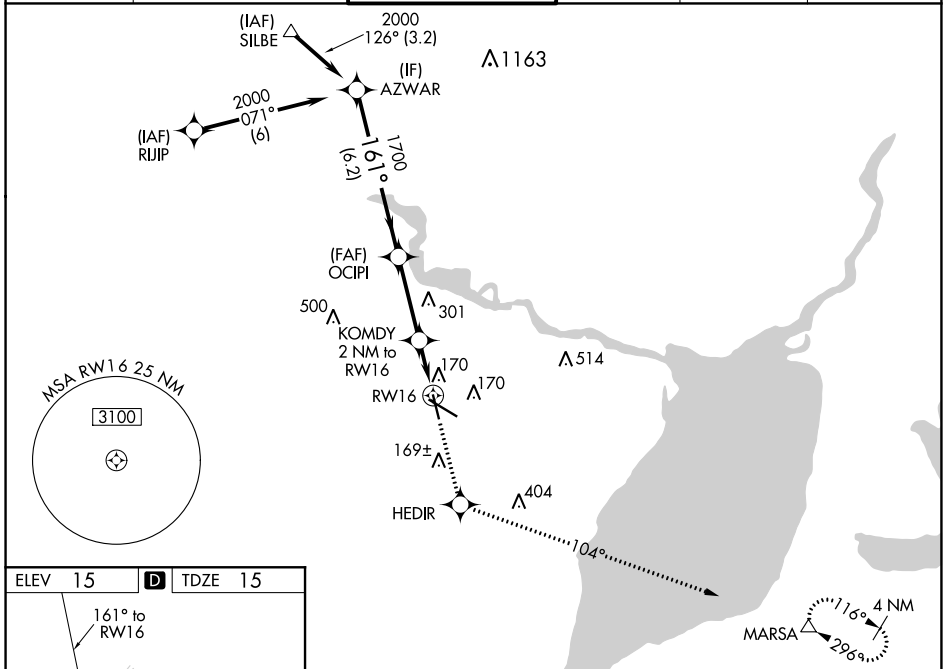
WAAS CH 82316 W16A	APP CRS 161°	Rwy Idg TDZE 15 Apt Elev 15	5070
--	------------------------	---	-------------

RNAV (GPS) RWY 16

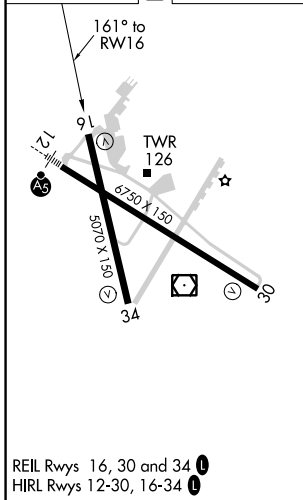
JACK BROOKS RGNL (BPT)

RNP APCH.		MISSED APPROACH: Climb to 3000 direct HEDIR and via track 104° to MARSA and hold.
RADAR required.		
<p>▼ Baro-VNAV NA when using Orange County altimeter setting. For uncompensated Baro-VNAV systems, LNAV/VNAV NA below -1.5°C (5°F) or above 49°C (120°F). Rwy 16 helicopter visibility reduction below ¾ SM NA. When local altimeter setting not received, use Orange County altimeter setting: increase LPV DA to 305; increase LNAV/VNAV DA to 454 feet; increase all MDAs 40 feet, increase LPV all Cats visibility ¼ SM and LNAV Cat D visibility ¼ SM. VDP NA when using Orange County altimeter setting.</p>		

ATIS 126.3	HOUSTON APP CON 121.3 377.1	BEAUMONT TOWER* 119.5 (CTAF) 0	GND CON 124.85	CLNC DEL 118.3	UNICOM 122.95
----------------------	---------------------------------------	--	--------------------------	--------------------------	-------------------------



ELEV 15	D	TDZE 15
---------	----------	---------



AZWAR	3000	HEDIR	MARSA		
		tr 104°			
			*LNAV only.		
2000	OCIPI	KOMDY			
		2 NM to RWY 16	*1.1 NM to RWY 16		
GP 3.00°					
TCH 52					
	6.2 NM	3.1 NM	0.9 NM 1.1 NM		
CATEGORY	A	B	C	D	E
LPV DA	273-¾ 258 (300-¾)				
LNAV/VNAV DA	422-1½ 407 (500-1½)				
LNAV MDA	420-1	405 (500-1)	420-1¼	405 (500-1¼)	420-1½
				405 (500-1½)	

SC-5, 16 JUN 2022 to 14 JUL 2022

SC-5, 16 JUN 2022 to 14 JUL 2022