

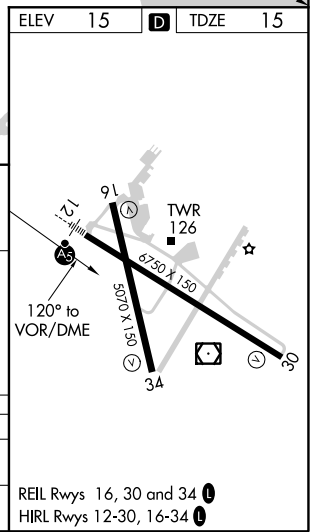
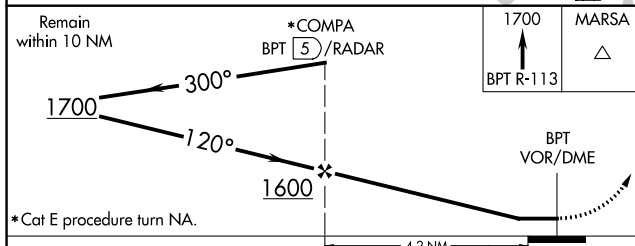
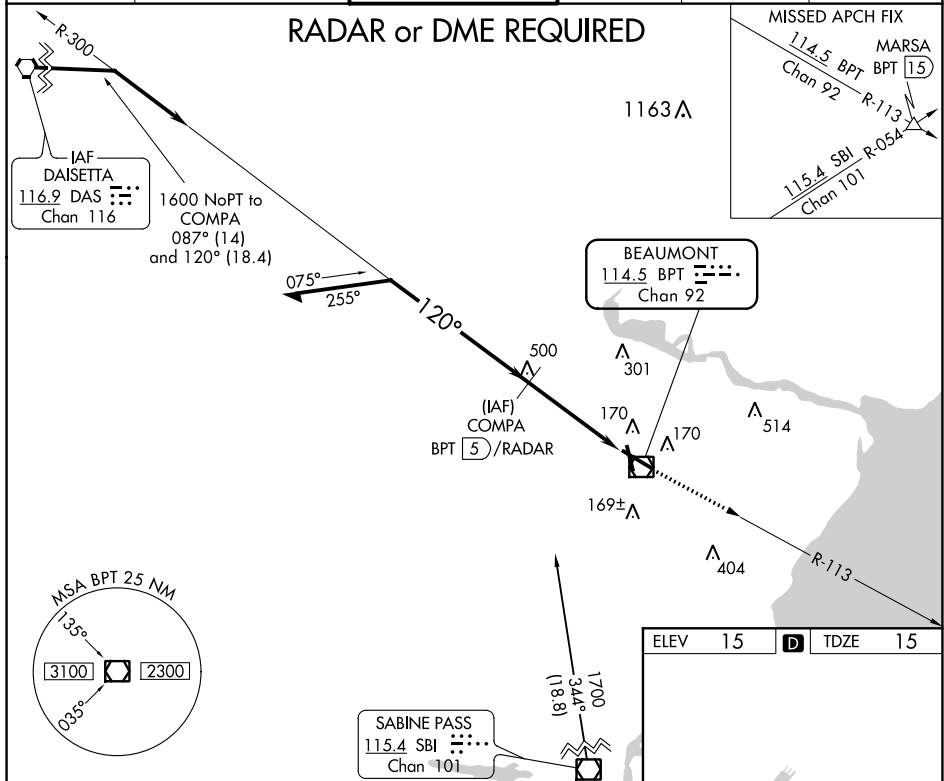
VOR/DME BPT <b>114.5</b> Chan <b>92</b>	APP CRS <b>120°</b>	Rwy Idg <b>6750</b> TDZE <b>15</b> Apt Elev <b>15</b>
-----------------------------------------------	------------------------	-------------------------------------------------------------

**VOR RWY 12**  
JACK BROOKS RGNL (BPT)

For inoperative MALS/R, increase S-12 Cat C/D/E visibility to RVR 6000. When local altimeter setting not received, use Orange County altimeter setting and increase all MDA 40 feet and S-12 Cat C/D/E visibility to RVR 4500. For inop MALS/R when using Orange County altimeter setting, increase S-12 Cat E visibility to 1/2 mile.

**MALS/R**  
MISSED APPROACH:  
Climb to 1700 via BPT R-113 to MARS A Int/BPT 15 DME.

ATIS <b>126.3</b>	HOUSTON APP CON <b>121.3 377.1</b>	BEAUMONT TOWER* <b>119.5 (CTAF) 0</b>	GND CON <b>124.85</b>	CLNC DEL <b>118.3</b>	UNICOM <b>122.95</b>
----------------------	---------------------------------------	------------------------------------------	--------------------------	--------------------------	-------------------------



CATEGORY	A	B	C	D	E
S-12	420/24	405 (500-1/2)	420/40	405 (500-3/4)	
CIRCLING	480-1 465 (500-1)	840-1 1/4 825 (900-1 1/4)	840-2 1/2 825 (900-2 1/2)	840-2 3/4 825 (900-2 3/4)	840-3 825 (900-3)

REIL Rwy 16, 30 and 34  
HIRL Rwy 12-30, 16-34

SC-5, 16 JUN 2022 to 14 JUL 2022

SC-5, 16 JUN 2022 to 14 JUL 2022