

VOR/DME BPT	APP CRS	Rwy Idg	5070
114.5	359°	TDZE	15
Chan 92		Apt Elev	15

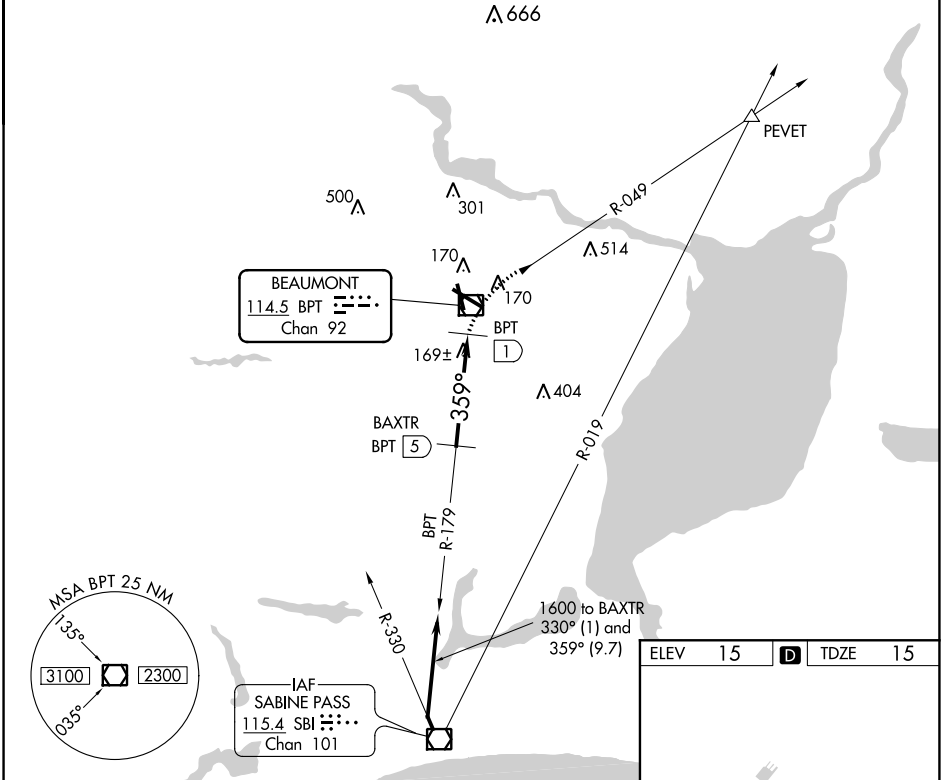
VOR/DME RWY 34

JACK BROOKS RGNL (BPT)

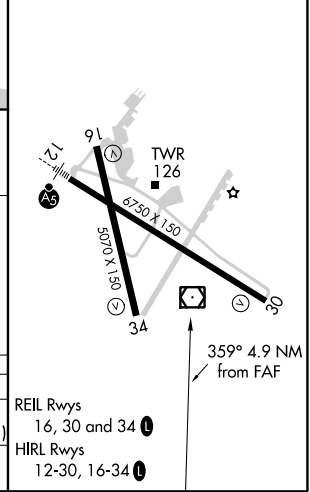
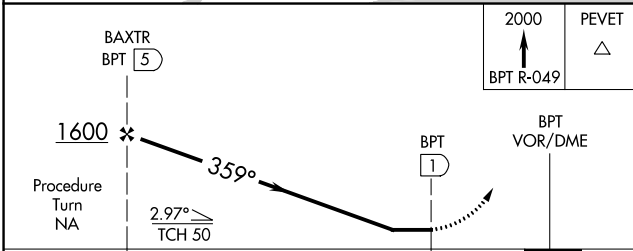
⚠ When local altimeter setting not received, use Orange County altimeter setting and increase all MDA 40 feet, increase S-34 visibility Cat C and D 1/4 SM.

⚠ MISSED APPROACH: Climb to 2000 via BPT VOR/DME R-049 to PEVET INT.

ATIS	HOUSTON APP CON	BEAUMONT TOWER*	GND CON	CLNC DEL	UNICOM
126.3	121.3 377.1	119.5 (CTAF) 0	124.85	118.3	122.95



ELEV	15	D	TDZE	15
------	----	---	------	----



CATEGORY	A	B	C	D	E
S-34	500-1¼	485 (500-1¼)		500-1½ 485 (500-1½)	500-1¾ 485 (500-1¾)
CIRCLING	500-1¼ 485 (500-1¼)	840-1½ 825 (900-1½)	840-2½ 825 (900-2½)	840-2¾ 825 (900-2¾)	840-3 825 (900-3)

REIL Rwy 16, 30 and 34
 HIRL Rwy 12-30, 16-34

SC-5, 16 JUN 2022 to 14 JUL 2022

SC-5, 16 JUN 2022 to 14 JUL 2022