

LOC/DME I-VIS <b>108.5</b> Chan <b>22</b>	APP CRS <b>301°</b>	Rwy ldg TDZE Apt Elev	<b>5635</b> <b>295</b> <b>295</b>
---	------------------------	-----------------------------	---

# ILS or LOC RWY 30

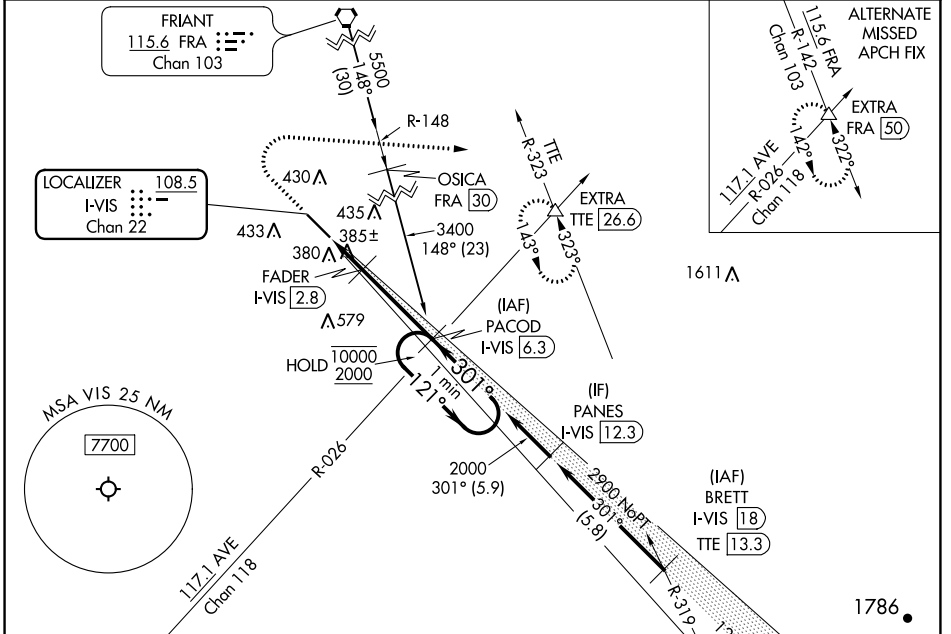
VISALIA MUNI (VIS)

DME required.  
 ▼ For inop ALS, increase S-LOC 30  
 ▲ NA Cat C/D visibility to 1 SM.

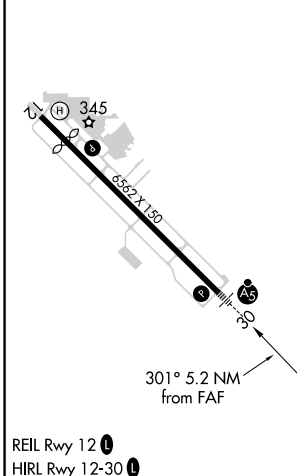


MISSED APPROACH: Climb to 1000 then climbing right turn to 3500 on heading 080° and on TTE VOR/DME R-323 to EXTRA INT/TTE 26.6 DME and hold, continue climb-in-hold to 3500.

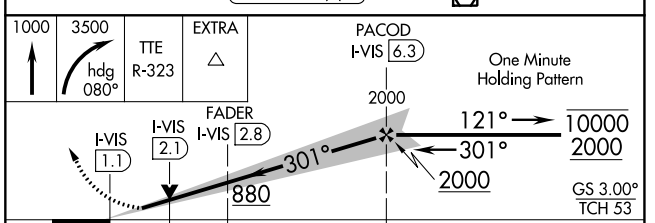
AWOS-3PT <b>119.925</b>	FRESNO APP CON <b>118.5</b>	CLNC DEL <b>118.5</b>	UNICOM <b>123.05</b> (CTAF) <b>1</b>
----------------------------	--------------------------------	--------------------------	---



ELEV 295	<b>D</b>	TDZE 295
----------	----------	----------



Procedure NA for arrivals at TTE VOR/DME on V165-459 southeast bound.  
 TULE 116.25 TTE Chan 109 (Y)



CATEGORY	A	B	C	D
S-ILS 30	502-½ 207 (300-½)			
S-LOC 30	640-½	345 (400-½)	640-⅝	345 (400-⅝)
<b>C</b> CIRCLING	720-1 425 (500-1)	760-1 465 (500-1)	760-1½ 465 (500-½)	940-2 645 (700-2)

SW-2, 16 JUN 2022 to 14 JUL 2022

SW-2, 16 JUN 2022 to 14 JUL 2022