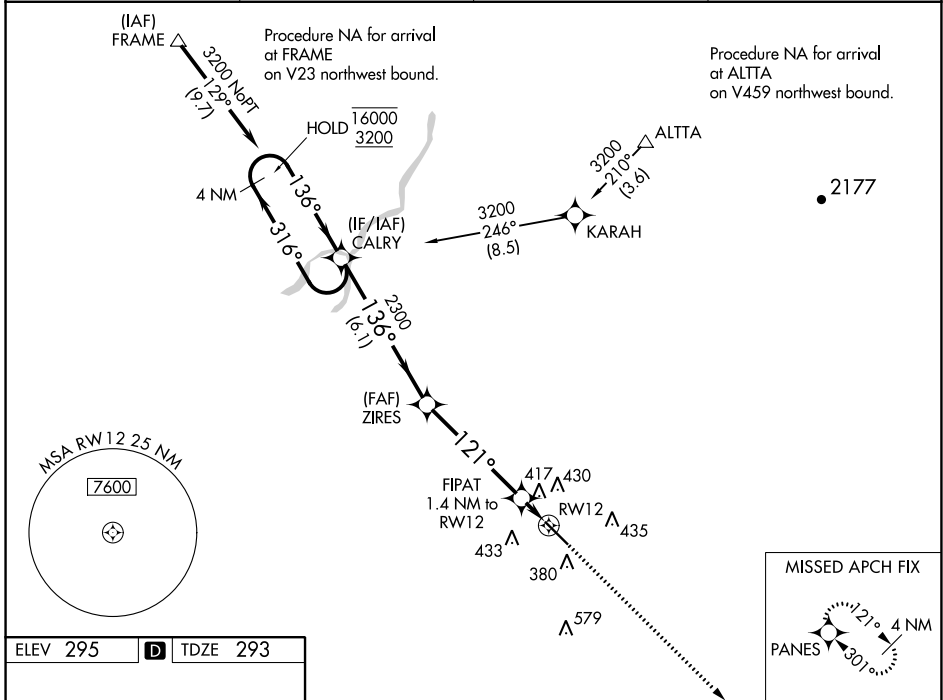


WAAS CH 82423 W12A	APP CRS 121°	Rwy Idg TDZE Apt Elev	5635 293 295
--	------------------------	-----------------------------	---

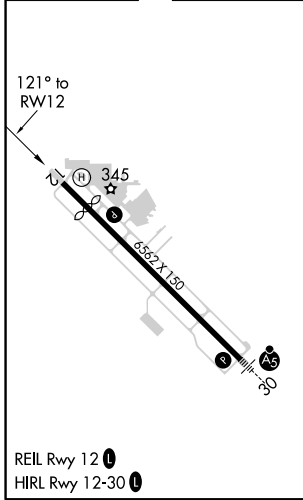
RNAV (GPS) RWY 12

VISALIA MUNI (VIS)

RNP APCH.		MISSED APPROACH: Climb to 2900 direct PANES and hold.	
<p>▼ For uncompensated Baro-VNAV systems, LNAV/VNAV NA below -15°C or above 54°C.</p> <p>▲</p>			
AWOS-3PT 119.925	FRESNO APP CON 118.5	CLNC DEL 118.5	UNICOM 123.05 (CTAF) 0



ELEV 295	D	TDZE 293
----------	----------	----------



4 NM Holding Pattern CALRY				VGSI and RNAV glidepath not coincident (VGSI Angle 3.00/TCH 40).		2900	PANES
16000 3200		← 316° → 136°		ZIRES 2300		FIPAT 1.4 NM to RWY 12	*LNAV only.
GP 3.00° TCH 50		2300		121°		RWY 12	*780
6.1 NM		4.8 NM		1.4 NM			
CATEGORY	A	B	C	D			
LPV DA	543-3/4			250 (300-3/4)			
LNAV/VNAV DA	697-1 1/8			404 (500-1 1/8)			
LNAV MDA	680-1 387 (400-1)		680-1 1/8 387 (400-1 1/8)				
C CIRCLING	720-1 425 (500-1)	760-1 465 (500-1)	760-1 1/2 465 (500-1 1/2)	940-2 645 (700-2)			

SW-2, 16 JUN 2022 to 14 JUL 2022

SW-2, 16 JUN 2022 to 14 JUL 2022