

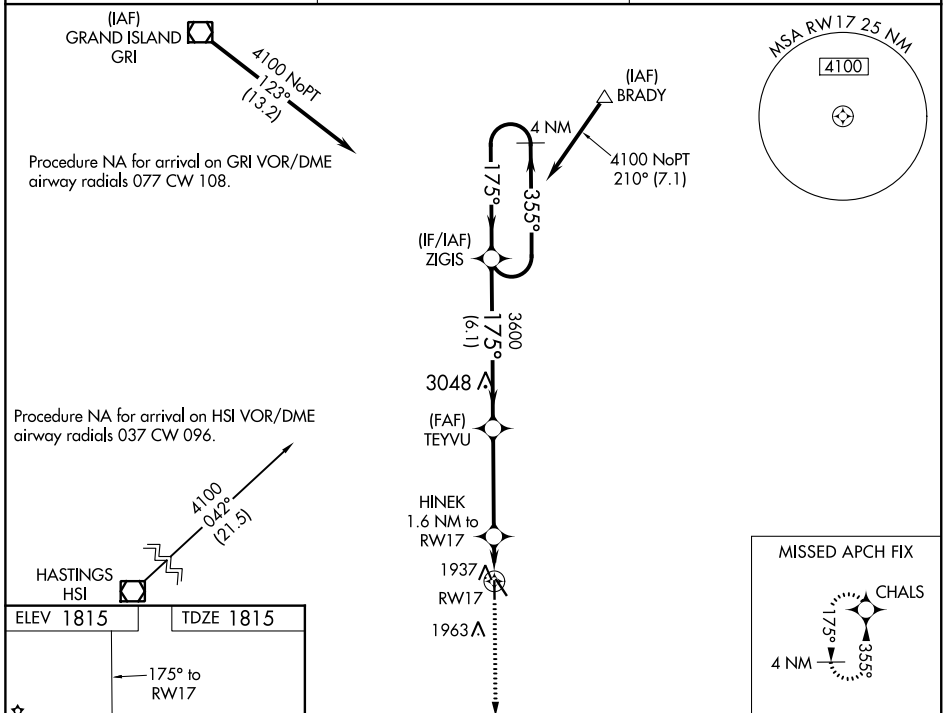
WAAS CH 99631 W17A	APP CRS 175°	Rwy Idg TDZE Apt Elev	3722 1815 1815
--	------------------------	-----------------------------	---

RNAV (GPS) RWY 17

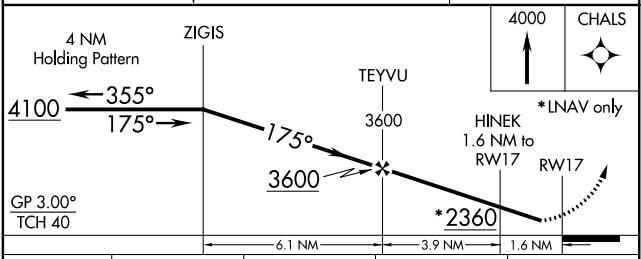
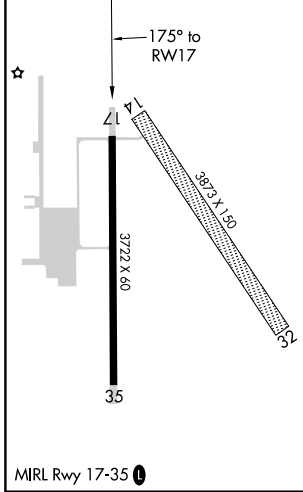
HARVARD STATE (Ø8K)

RNP APCH.	MISSED APPROACH: Climb to 4000 direct CHALS and hold.
▽ Baro-VNAV NA. Use Aurora Muni altimeter setting; when not received, use Central Nebraska Rgnl altimeter setting; increase LPV DA to 2120 feet, increase LNAV/VNAV DA to 2135 feet and visibility all Cats ½ SM, increase all MDAs 20 feet. Rwy 17 helicopter visibility reduction below ¾ SM NA.	

AUH AWOS-3 121.225	MINNEAPOLIS CENTER 119.4 278.8	CTAF 122.90
------------------------------	--	-----------------------



ELEV 1815	TDZE 1815
-----------	-----------



CATEGORY	A	B	C	D
LPV DA	2102-1	287 (300-1)	NA	
LNAV/VNAV DA	2117-1	302 (400-1)	NA	
LNAV MDA	2280-1 465 (500-1)	2300-1 485 (500-1)	NA	

NC-2, 16 JUN 2022 to 14 JUL 2022

NC-2, 16 JUN 2022 to 14 JUL 2022