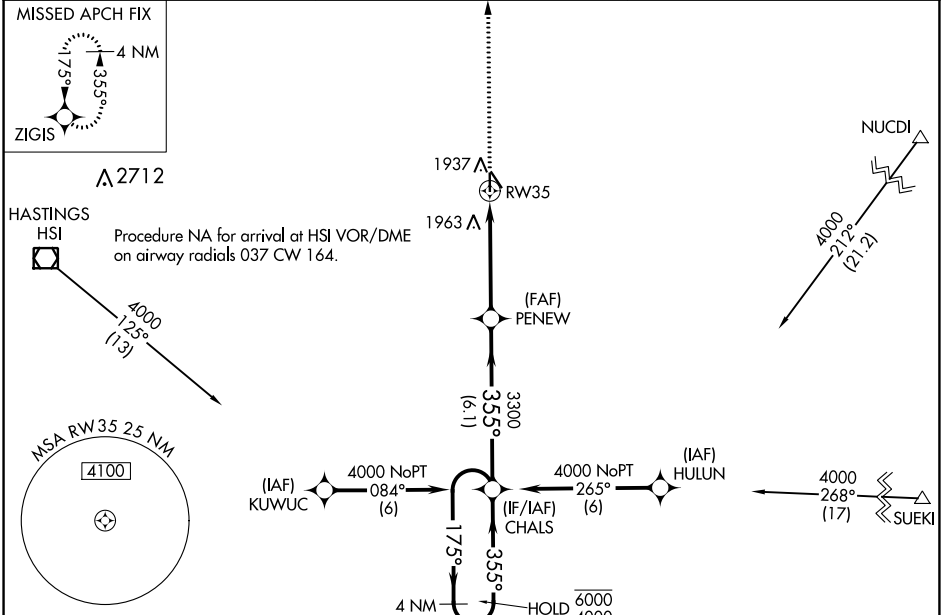


|  |                        |   |
|--|------------------------|---|
| WAAS<br>CH <b>86531</b><br><b>W35A</b> | APP CRS<br><b>355°</b> | Rwy Idg <b>3722</b><br>TDZE <b>1814</b><br>Apt Elev <b>1815</b> |
|--|------------------------|---|

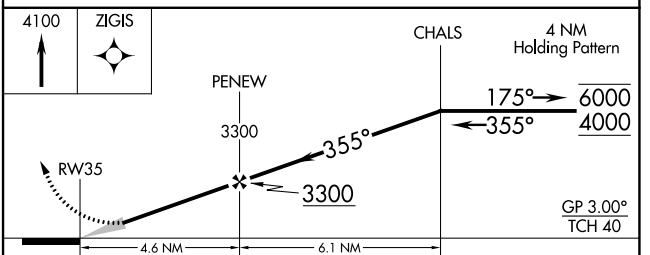
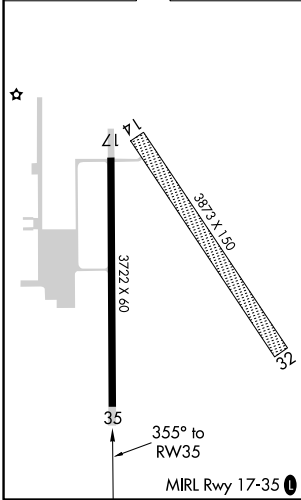
# RNAV (GPS) RWY 35

HARVARD STATE (Ø8K)

|   |  |   |
|---|--|---|
| RNP APCH.   |  | MISSED APPROACH: Climb to 4100 direct ZIGIS and hold. |
| ▽ Baro-VNAV NA. Use Aurora altimeter setting; when not received, use Grand Island altimeter setting; increase LPV DA to 2119 feet and LNAV/VNAV DA to 2311 feet; increase all MDAs 20 feet.<br>▲ NA |  |   |
| AUH AWOS-3<br><b>121.225</b>  | MINNEAPOLIS CENTER<br><b>119.4 278.8</b> | CTAF<br><b>122.9</b>                                  |



|           |           |
|-----------|-----------|
| ELEV 1815 | TDZE 1814 |
|-----------|-----------|



| CATEGORY     | A                    | B                          | C | D  |
|--------------|----------------------|----------------------------|---|----|
| LPV DA       | 2101-1               | 287 (300-1)                |   | NA |
| LNAV/VNAV DA | 2293-1 $\frac{3}{8}$ | 479 (500-1 $\frac{3}{8}$ ) |   | NA |
| LNAV MDA     | 2320-1               | 506 (600-1)                |   | NA |

NC-2, 16 JUN 2022 to 14 JUL 2022

NC-2, 16 JUN 2022 to 14 JUL 2022