

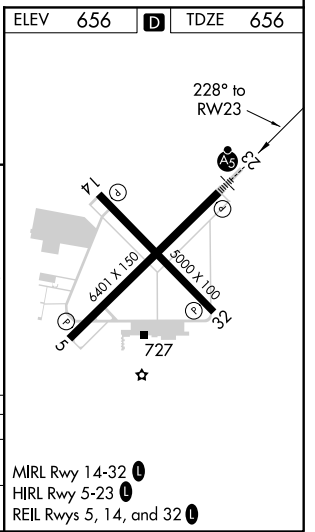
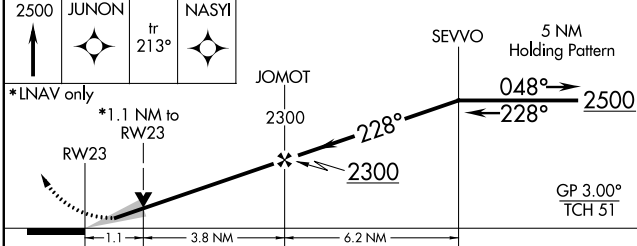
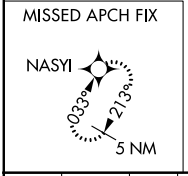
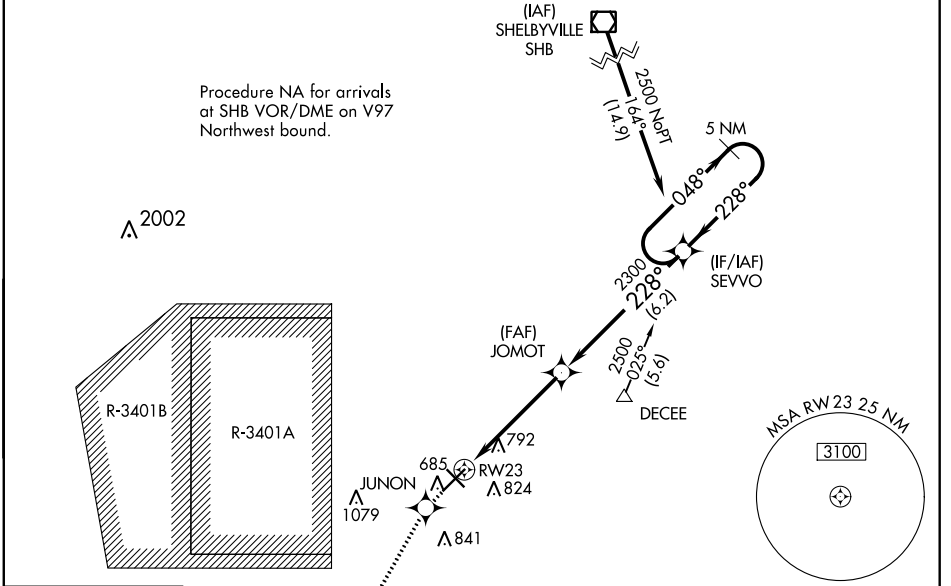
WAAS CH 90399 W23A	APP CRS 228°	Rwy Idg TDZE 656 Apt Elev 656	6401
----------------------------------------	------------------------	---------------------------------------------------	-------------

RNAV (GPS) RWY 23

COLUMBUS MUNI (BAK)

RNP APCH.	MALSRL	MISSED APPROACH: Climb to 2500 direct JUNON and on track 213° to NASYI and hold.
<p>▼ VDP NA when using Indianapolis Intl altimeter setting. If local altimeter setting not received, use Indianapolis Intl altimeter setting and increase all DA's/MDA's 100 feet. For inoperative MALSRL, increase LPV all Cats visibility to 3/4 and LNAV Cat D visibility to 1 1/4.</p>		

AWOS-3 119.75	INDIANAPOLIS APP CON 134.85 317.8	COLUMBUS TOWER ★ 118.6 (CTAF) 0	GND CON 121.6	CLNC DEL 134.85	UNICOM 122.95
-------------------------	---------------------------------------------	-------------------------------------------	-------------------------	---------------------------	-------------------------



CATEGORY	A	B	C	D
LPV DA	906-1/2 250 (300-1/2)			
LNAV MDA	1060-1/2 404 (500-1/2)	1060-3/4 404 (500-3/4)	1060-1 404 (500-1)	

MIRL Rwy 14-32 0
 HIRL Rwy 5-23 0
 REIL Rws 5, 14, and 32 0

EC-2, 16 JUN 2022 to 14 JUL 2022

EC-2, 16 JUN 2022 to 14 JUL 2022