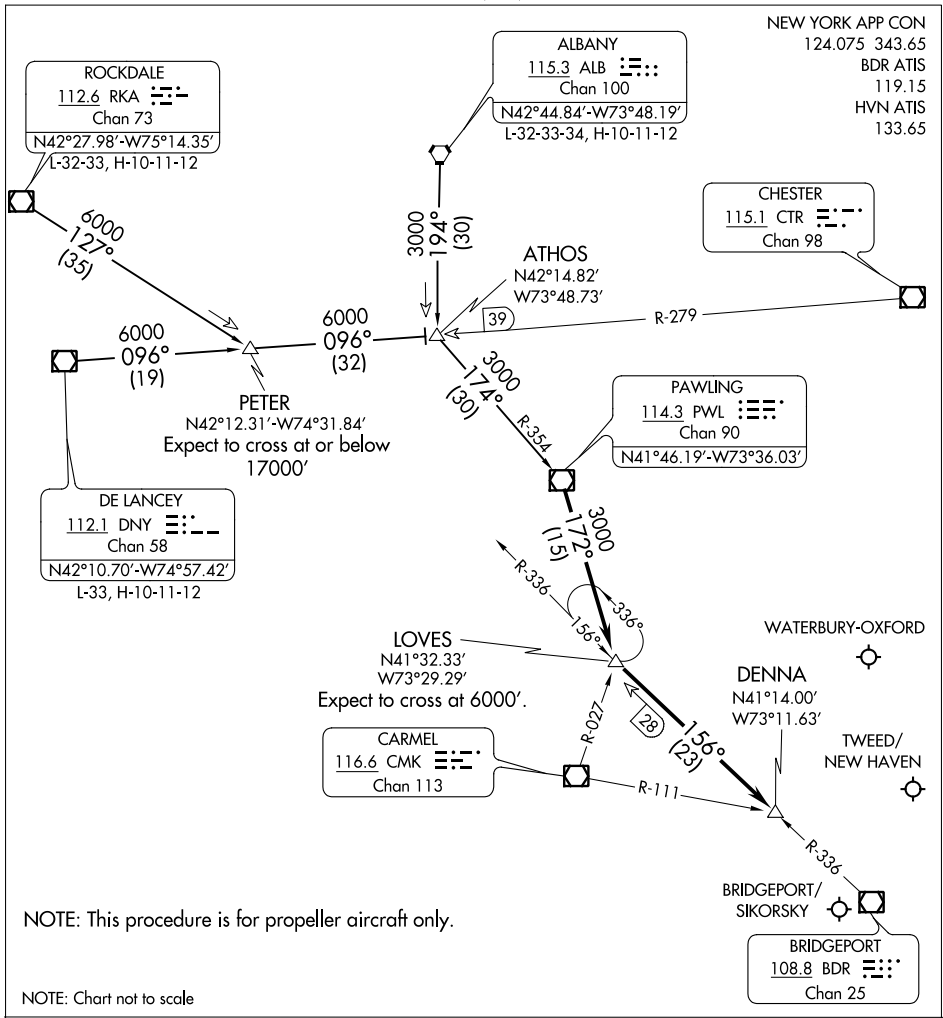


# DENNA TWO ARRIVAL

AL-621 (FAA)

BRIDGEPORT, CONNECTICUT

NEW YORK APP CON  
 124.075 343.65  
 BDR ATIS  
 119.15  
 HVN ATIS  
 133.65



NE-1, 16 JUN 2022 to 14 JUL 2022

NE-1, 16 JUN 2022 to 14 JUL 2022

NOTE: This procedure is for propeller aircraft only.

NOTE: Chart not to scale

ALBANY TRANSITION (ALB.DENNA2): From over ALB VORTAC via ALB R-194 to ATHOS INT, then via PWL R-354 to PWL VOR/DME. Thence....

DELANCEY TRANSITION (DNY.DENNA2): From over DNY VOR/DME via DNY R-096 to ATHOS INT, then via PWL R-354 to PWL VOR/DME. Thence....

ROCKDALE TRANSITION (RKA.DENNA2): From over RKA VOR/DME via RKA R-127 to PETER INT, then via DNY R-096 to ATHOS INT, then via PWL R-354 to PWL VOR/DME. Thence....

....From over PWL VOR/DME via PWL R-172 to LOVES INT. Then via BDR R-336 to DENNA INT. Expect radar vectors to final approach course.

# DENNA TWO ARRIVAL

BRIDGEPORT, CONNECTICUT