

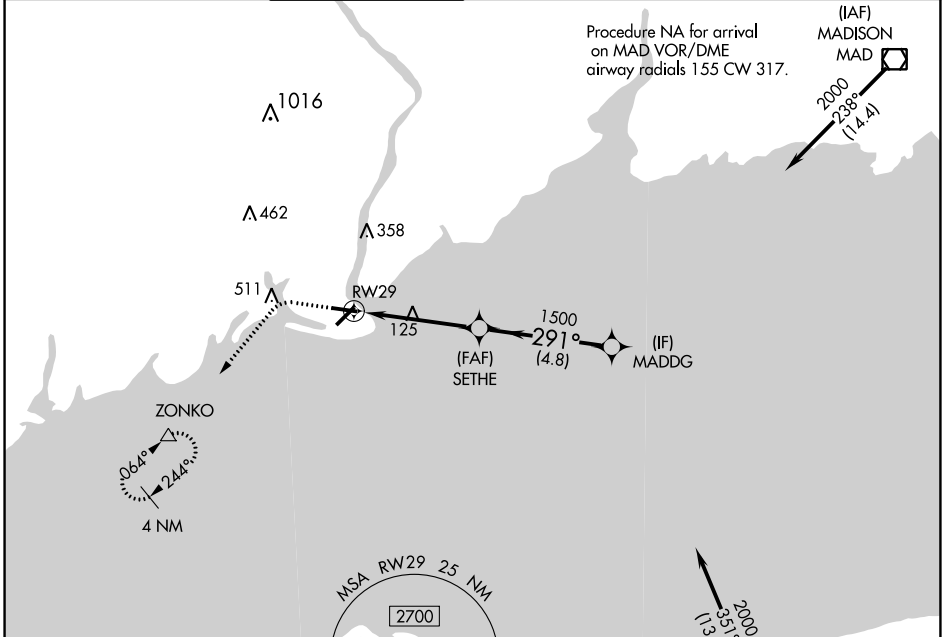
APP CRS 291°	Rwy Idg 4395
	TDZE 7
	Apt Elev 9

RNAV (GPS) RWY 29

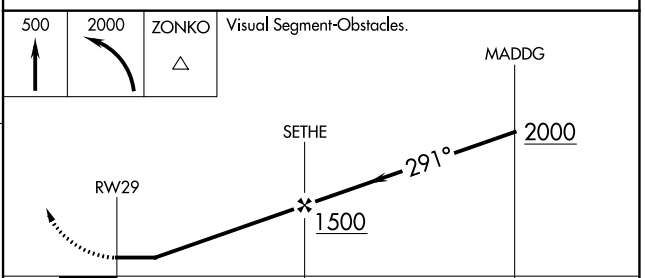
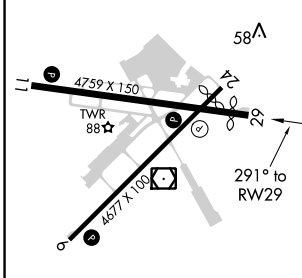
BRIDGEPORT/SIKORSKY (BDR)

RNP APCH.		MISSED APPROACH: Climb to 500 then climbing left turn to 2000 direct ZONKO and hold.				
Rwy 29 helicopter visibility reduction below 1 SM NA.						

ATIS 119.15	NEW YORK APP CON 124.075 343.65	BRIDGEPORT TOWER* 120.9 (CTAF) 257.8	GND CON 121.75 257.8	CLNC DEL 121.75	CLNC DEL 124.075 (When twr closed)	UNICOM 123.0
-----------------------	---	---	--------------------------------	---------------------------	---	------------------------



ELEV 9	D	TDZE 7
---------------	----------	---------------



CATEGORY	A	B	C	D
LNAV MDA	380-1		373 (400-1)	
CIRCLING	480-1 471 (500-1)	620-1 611 (700-1)	820-2½ 811 (900-2½)	820-2¾ 811 (900-2¾)

NE-1, 16 JUN 2022 to 14 JUL 2022

NE-1, 16 JUN 2022 to 14 JUL 2022