

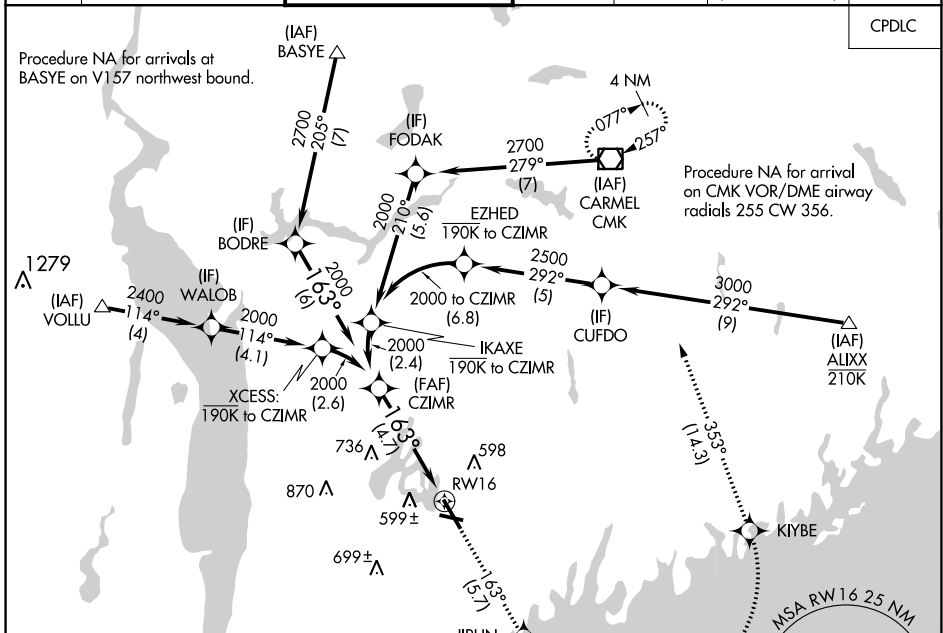
APP CRS	Rwy Idg	<b>6549</b>
<b>163°</b>	TDZE	<b>439</b>
	Apt Elev	<b>439</b>

# RNAV (RNP) Z RWY 16

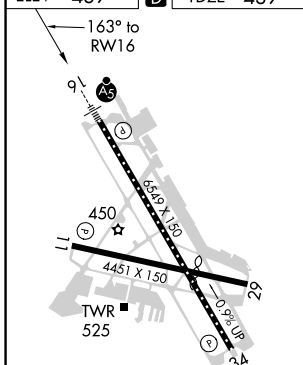
WESTCHESTER COUNTY (HPN)

For uncompensated Baro-VNAV systems, procedure NA below -14C (7°F) or above 54°C (130°F). RF required. GPS required.	MALSR 	MISSED APPROACH: Climb to 3000 on track 163° to JIRUN, left turn to KIYBE, then track 353° to CMK VOR/DME and hold.				
			D-ATIS <b>133.8</b>	NEW YORK APP CON <b>120.8 126.4 257.65</b>	WESTCHESTER TOWER ★ <b>118.575 (CTAF) 284.65</b>	GND CON <b>121.825</b>

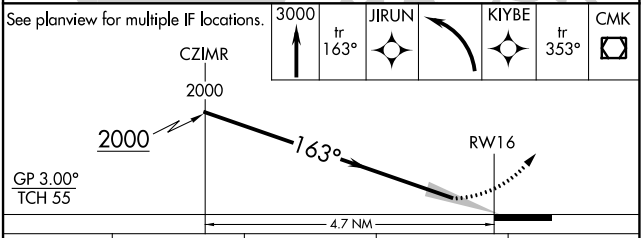
CPDLC
-------



ELEV	<b>439</b>	TDZE	<b>439</b>
------	------------	------	------------



- REIL Rwys 11 and 34
- HIRL Rwy 16-34
- MIRL Rwy 11-29
- TDZ/CL Rwy 16



CATEGORY	A	B	C	D
RNP 0.15 DA		810/40	371 (400-¾)	
RNP 0.30 DA		950-1¼	511 (600-1¼)	

**AUTHORIZATION REQUIRED**

NE-2, 16 JUN 2022 to 14 JUL 2022

NE-2, 16 JUN 2022 to 14 JUL 2022