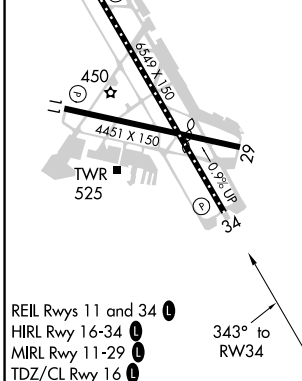
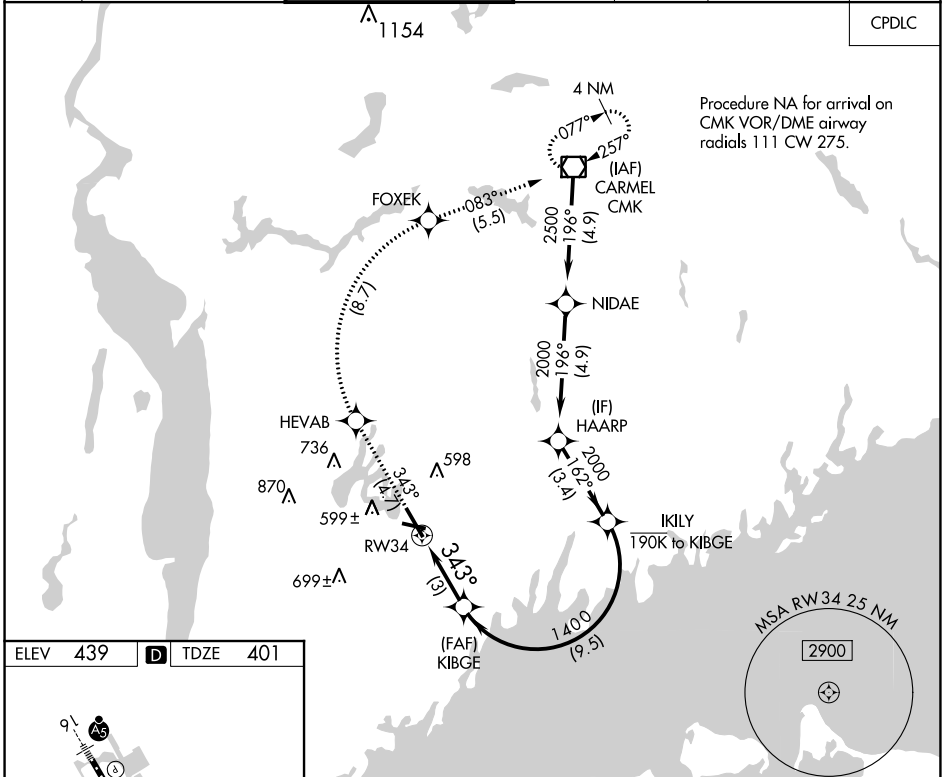


APP CRS	Rwy Idg	6549
<b>343°</b>	TDZE	401
	Apt Elev	439

# RNAV (RNP) Z RWY 34

WESTCHESTER COUNTY (HPN)

▼	For uncompensated Baro-VNAV systems, procedure NA below -14°C (7°F) or above 54°C (130°F). RF required. GPS required.		MISSED APPROACH: Climb to 3000 on track 343° to HEVAB, right turn to FOXEK, then on track 083° to CMK VOR/DME and hold.			
D-ATIS	NEW YORK APP CON	WESTCHESTER TOWER ★	GND CON	CLNC DEL	CLNC DEL	UNICOM
133.8	120.8 126.4 257.65	118.575 (CTAF) 0 284.65	121.825	127.25	126.4 (when twr closed)	122.95



3000	tr 343°	HEVAB	FOXEK	tr 083°	CMK	VGS1 and RNAV glidepath not coincident (VGS1 Angle 3.00/TCH 56).
------	---------	-------	-------	---------	-----	--

CATEGORY	A	B	C	D
RNP 0.30 DA	788-1 3/8		387 (400-1 3/8)	

**AUTHORIZATION REQUIRED**