

LOC I-OXR 108.7	APP CRS 256°	Rwy ldg TDZE Apt Elev	5500 44 45
---------------------------	------------------------	-----------------------------	---------------------------------------

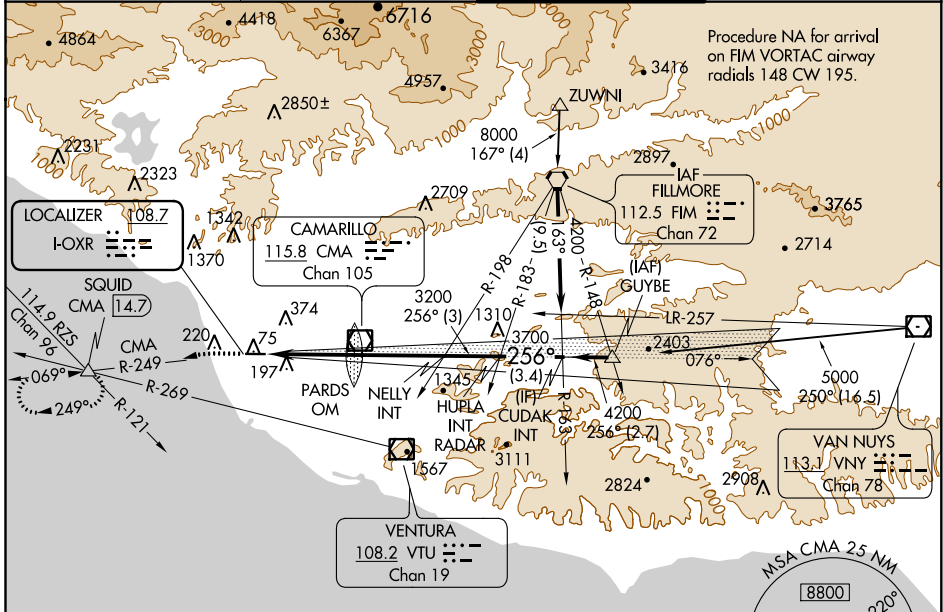
ILS or LOC RWY 25

OXNARD (OXR)

⚠ Rwy 25 helicopter visibility reduction below 3/4 SM NA. Autopilot coupled approach NA below 867. Inop table does not apply. When local altimeter setting not received, use Camarillo altimeter setting and increase S-ILS 25 DA to 312 and all MDA 20 feet, increase S-LOC 25 Cat C/D visibility 1/8 SM, and Circling Cat C visibility 1/4 SM.

MALSF
⚠ MISSED APPROACH: Climb to 520 then climbing left turn to 2000 on CMA VOR/DME R-249 to SQUID INT/14.7 DME and hold.

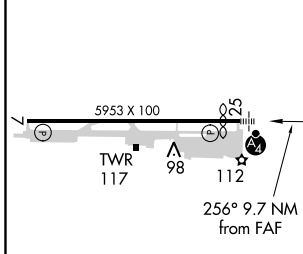
ATIS 118.05	POINT MUGU APP CON ★ 124.7 335.5	OXNARD TOWER ★ 134.95 (CTAF) 0 257.8	GND CON 121.9
-----------------------	--	--	-------------------------



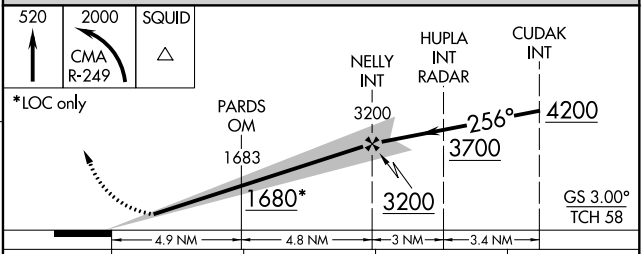
SW-3, 16 JUN 2022 to 14 JUL 2022

SW-3, 16 JUN 2022 to 14 JUL 2022

ELEV 45	D	TDZE 44
---------	----------	---------



REIL Rwy 7	MIRL Rwy 7-25				
FAF to MAP 9.7 NM					
Knots	60	90	120	150	180
Min:Sec	9:42	6:28	4:51	3:53	3:14



CATEGORY	A	B	C	D
S-ILS 25	294-1 250 (300-1)			
S-LOC 25	580-1	536 (600-1)	580-1½	536 (600-1½)
CIRCLING	580-1	535 (600-1)	700-1¾ 655 (700-1¾)	760-2¼ 715 (800-2¼)