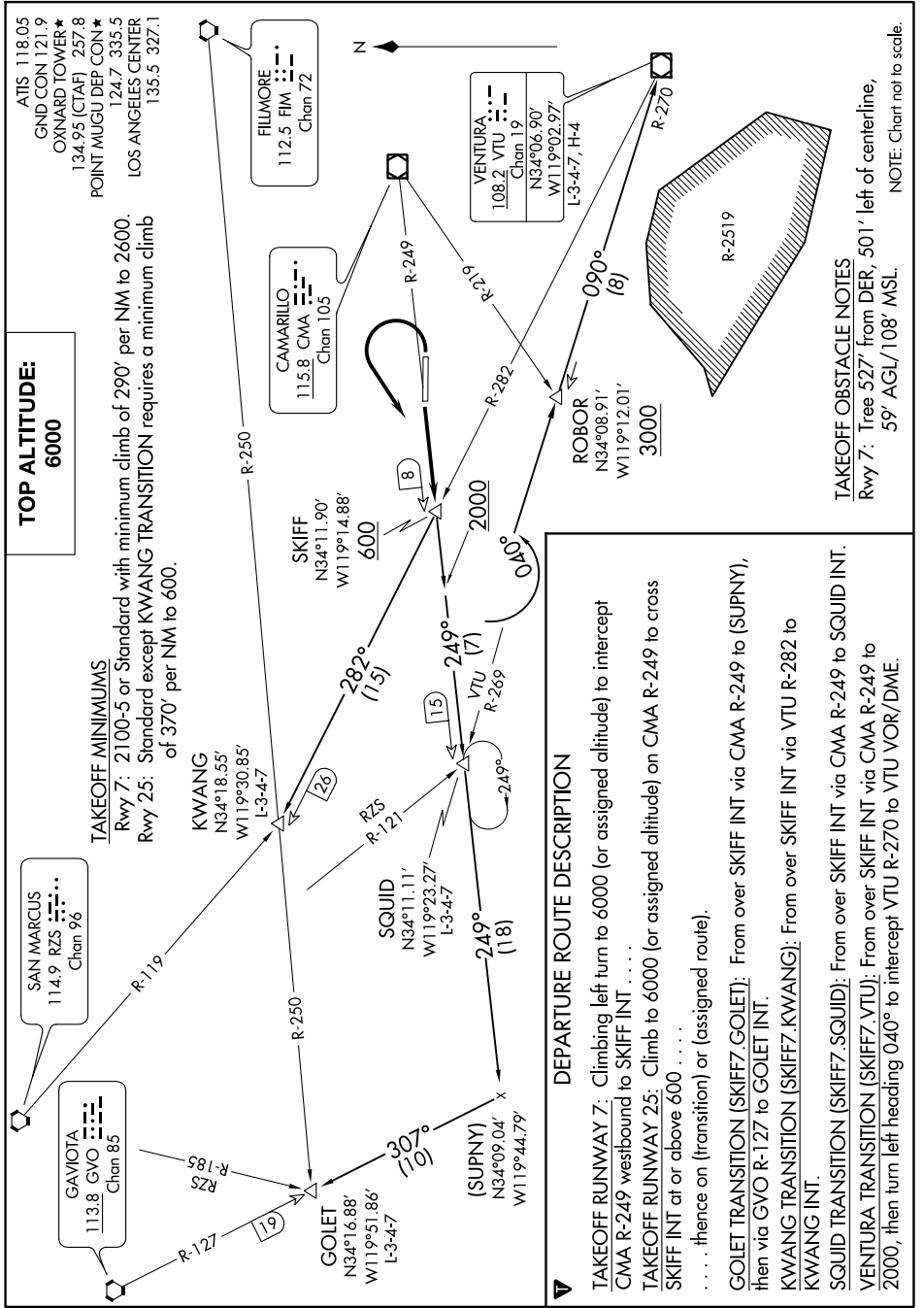


SW-3, 16 JUN 2022 to 14 JUL 2022



**TOP ALTITUDE:**  
**6000**

**TAKEOFF MINIMUMS**  
Rwy 7: 2100-5 or Standard with minimum climb of 290' per NM to 2600.  
Rwy 25: Standard except KWANG TRANSITION requires a minimum climb of 370' per NM to 600.

**DEPARTURE ROUTE DESCRIPTION**

**TAKEOFF RUNWAY 7:** Climbing left turn to 6000 (or assigned altitude) to intercept CMA R-249 westbound to SKIFF INT . . . .

**TAKEOFF RUNWAY 25:** Climb to 6000 (or assigned altitude) on CMA R-249 to cross SKIFF INT at or above 600 . . . .

. . . . thence on (transition) or (assigned route).

**GOLEET TRANSITION (SKIFF7.GOLET):** From over SKIFF INT via CMA R-249 to (SUPNY), then via GVO R-127 to GOLET INT.

**KWANG TRANSITION (SKIFF7.KWANG):** From over SKIFF INT via VTU R-282 to KWANG INT.

**SQUID TRANSITION (SKIFF7.SQUID):** From over SKIFF INT via CMA R-249 to SQUID INT.

**VENTURA TRANSITION (SKIFF7.VTU):** From over SKIFF INT via CMA R-249 to 2000, then turn left heading 040° to intercept VTU R-270 to VTU VOR/DME.

**TAKEOFF OBSTACLE NOTES**  
Rwy 7: Tree 527' from DER, 501' left of centerline, 59' AGL/108' MSL.

NOTE: Chart not to scale.

SW-3, 16 JUN 2022 to 14 JUL 2022