


LOC/DME I-GLD 108.9 Chan 26	APP CRS 305°	Rwy Idg TDZE Apt Elev	5499 3654 3657
---	------------------------	-----------------------------	---

ILS or LOC RWY 30
RENNER FLD/GOODLAND MUNI (GLD)

⚠ Circling NA south of runways 5 and 30. ADF required. VDP NA with Burlington, CO altimeter setting. When local altimeter setting not received, use Burlington, CO altimeter setting and increase all DA 144 feet and all MDA 160 feet. Increase S-ILS 30 all Cats visibility to ½ mile, S-LOC 30 Cat C/D visibility to 1 ½ mile, Circling Cat C visibility to 1 ¼ mile, and Cat D to 2 ¼ mile. Circling NA to Rwy 17 and 35. Circling Rwy 5, 23 NA at night.

MALSR

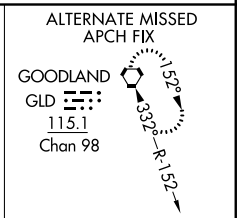
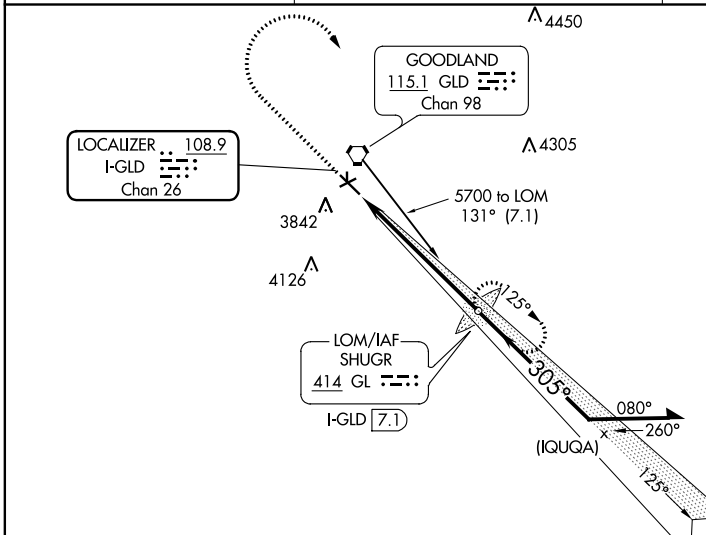


MISSED APPROACH: Climb to 4500 then climbing right turn to 5700 direct SHUGR LOM/1-GLD 7.1 DME and hold.

ASOS
121.025

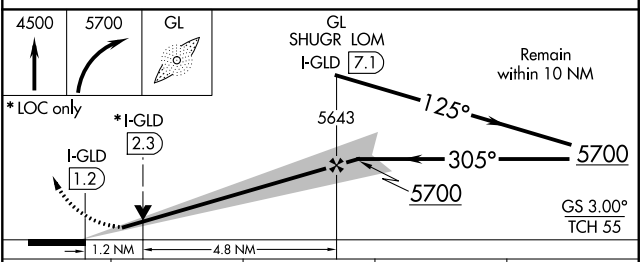
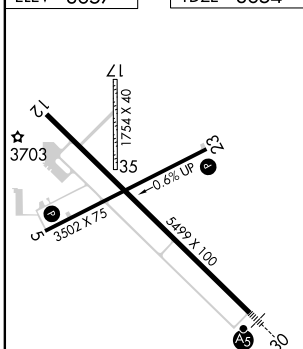
DENVER CENTER
132.7 226.675

UNICOM
122.8 (CTAF)



ADF REQUIRED

ELEV 3657	TDZE 3654
-----------	-----------



CATEGORY	A	B	C	D
S-ILS-30	3854-½		200 (200-½)	
S-LOC-30	4100-½	446 (500-½)	4100-¾	446 (500-¾)
CIRCLING	4100-1 443 (500-1)	4120-1 463 (500-1)	4120-1½ 463 (500-1½)	4240-2 583 (600-2)

REIL Rwy 12
 MIRL Rwys 5-23 and 12-30
 FAF to MAP 6 NM

Knots	60	90	120	150	180
Min:Sec	6:00	4:00	3:00	2:24	2:00

NC-2, 16 JUN 2022 to 14 JUL 2022

NC-2, 16 JUN 2022 to 14 JUL 2022