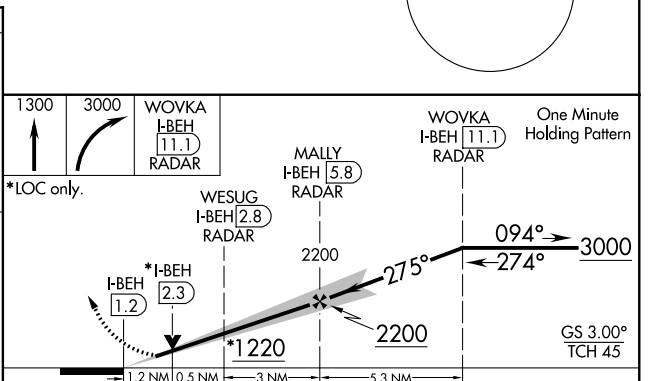
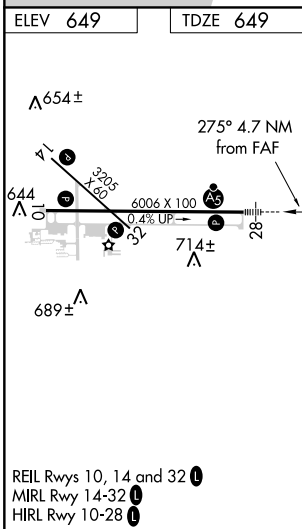
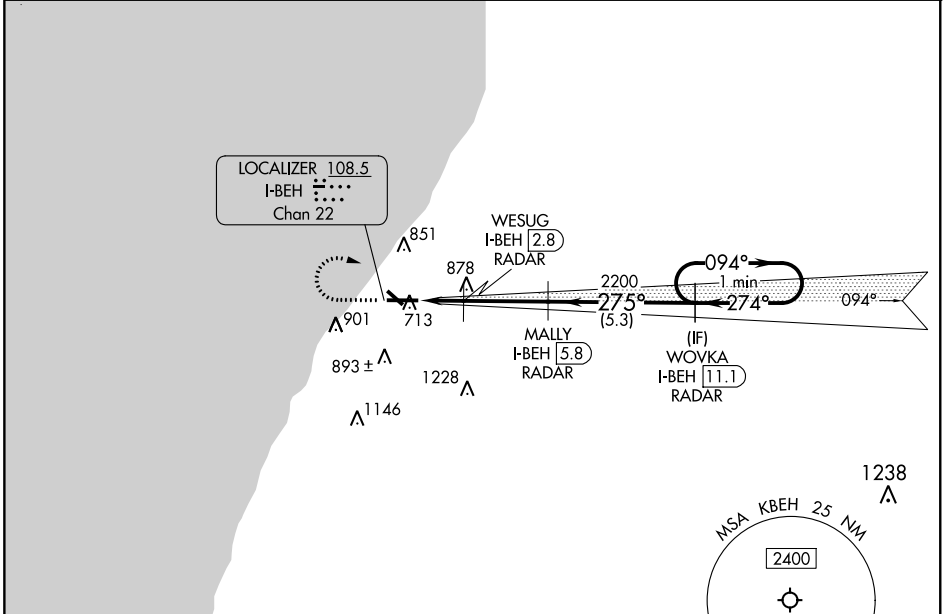


LOC I-BEH <b>108.5</b>	APP CRS <b>274°</b>	Rwy Idg <b>6006</b>
Chan <b>22</b>	TDZE <b>649</b>	Apt Elev <b>649</b>

# ILS or LOC RWY 28

SOUTHWEST MICHIGAN RGNL (BEH)

RNAV 1-GPS required.		MALS R	MISSED APPROACH: Climb to 1300 then climbing right turn to 3000 direct WOVKA and hold.
DME Required for LOC only.			
<p>▼ Circling Rwy 14 and 32 NA at night.</p> <p>▲ NA For inop ALS, increase S-LOC 28 Cat C/D visibility to 1½ SM.</p>			
ASOS <b>121.55</b>	SOUTH BEND APP CON* <b>118.55 257.8</b>	SOUTH BEND CLNC DEL <b>119.7</b>	UNICOM <b>123.0 (CTAF) 0</b>



CATEGORY	A	B	C	D
S-ILS 28	849-½		200 (200-½)	
S-LOC 28	1060-½	411 (500-½)	1060-¾	411 (500-¾)
CIRCLING	1140-1 491 (500-1)	1160-1 511 (600-1)	1300-1¼ 651 (700-1¼)	1340-2 691 (700-2)

EC-1, 16 JUN 2022 to 14 JUL 2022

EC-1, 16 JUN 2022 to 14 JUL 2022