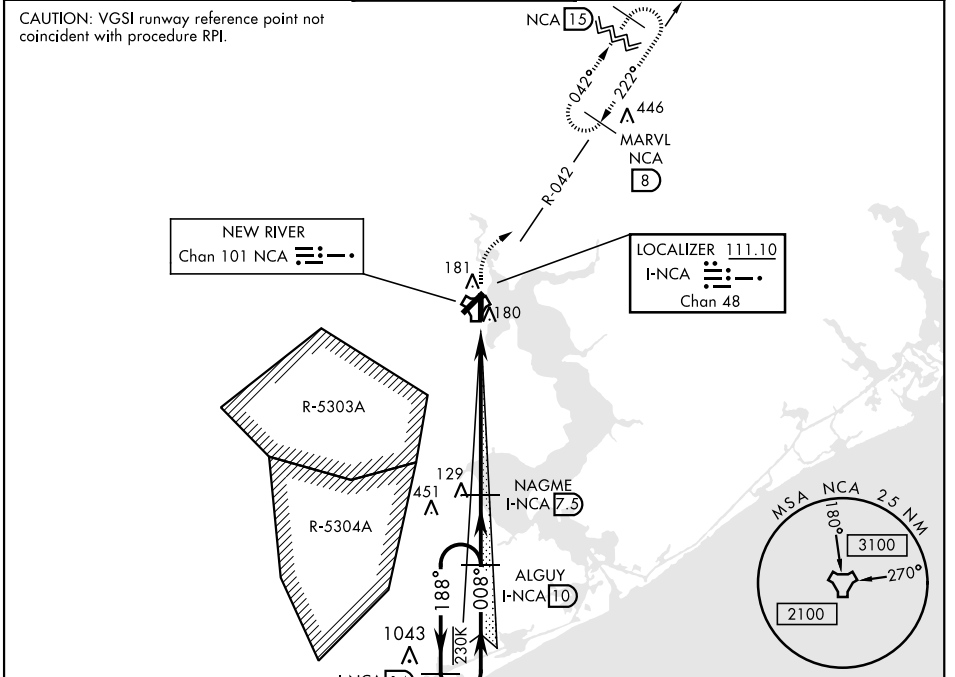


ILS or LOC/DME RWY 1

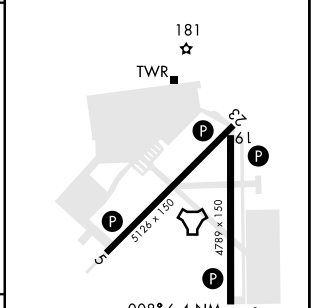
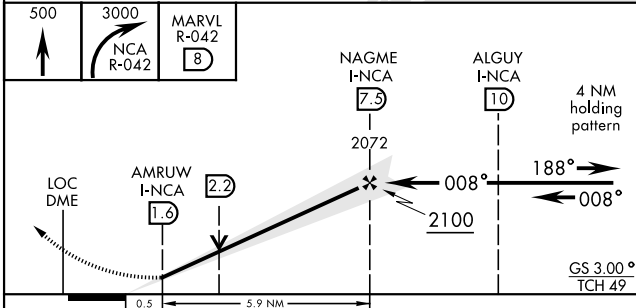
LOC I-NCA 111.10 Chan 48	APCH CRS 008°	Rwy Idg TDZE Arpt Elev 4789 24 26	AL-732 [USN]	NEW RIVER MCAS (MC CUTCHEON FLD) (KNCA)
--	-------------------------	---	--------------	---

RADAR, TACAN required.		SALSF 	MISSED APPROACH: Climb to 500, then climbing right turn to 3000, intercept NCA R-042 to MARVL and hold, continue climb-in-hold to 3000.
*When ALS inop, increase CAT AB vis to 1 mile, CAT CD vis to 1 1/2 miles.			

ATIS ★ 288.325	CHERRY POINT APP CON 119.35 377.175	TOWER ★ 134.95(CTAF) 0★ 360.2	GND CON 121.8 254.275	CLNC DEL 269.25	ASR/PAR
--------------------------	---	---	---------------------------------	---------------------------	---------



EMERG SAFE ALT 100 NM 3400	ELEV 26	TDZE 24
----------------------------	---------	---------



CATEGORY	A	B	C	D
S-ILS 1	224-3/4		200	(200-3/4)
S-LOC 1 *	420-3/4	396 (400-3/4)	420-7/8	396 (400-7/8)
CIRCLING	500-1	474 (500-1)	500-1 1/2 474 (500-1 1/2)	580-2 554 (600-2)

HIRL all rwys				
FAF to MAP 5.9 NM				
Knots	60	90	120	150 180
Min:Sec	5:54	3:56	2:57	2:22 1:58

ILS or LOC/DME RWY 1

SE-2, 16 JUN 2022 to 14 JUL 2022

SE-2, 16 JUN 2022 to 14 JUL 2022