

RNAV (GPS) RWY 23

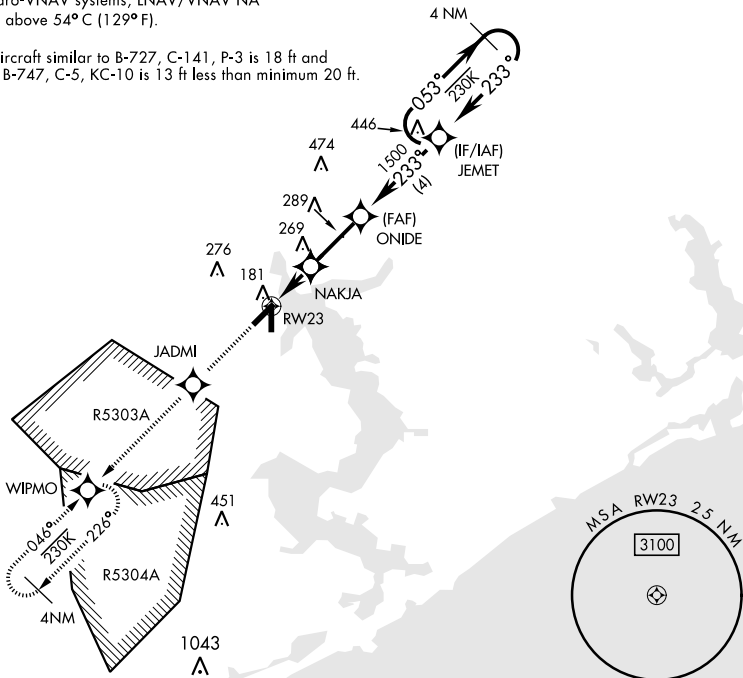
WAAS Chan 92556 W23A	APCH CRS 233°	Rwy Idg TDZE 24 Arprt Elev 26	AL-732 [USN]	NEW RIVER MCAS (MC CUTCHEON FLD) (KNCA)
--	-------------------------	---	--------------	---

RNP APCH.	MISSED APPROACH: Climb to 1600 direct JADMI, track 233° to WIPMO and hold.
-----------	--

ATIS ★ 288.325	CHERRY POINT APP CON 119.35 377.175	TOWER ★ 134.95 (CTAF) 0★ 360.2	GND CON 121.8 254.275	CLNC DEL 269.25	ASR/PAR
--------------------------	---	---	---------------------------------	---------------------------	---------

For uncompensated Baro-VNAV systems, LNAV/VNAV NA below -15°C (5°F) or above 54°C (129°F).

CAUTION: WCH for aircraft similar to B-727, C-141, P-3 is 18 ft and aircraft similar to B-1, B-747, C-5, KC-10 is 13 ft less than minimum 20 ft.



EMERG SAFE ALT 100 NM 3400

1600 ↑ JADMI WIPMO	ELEV 26	TDZE 24		
ONIDE JEMET 4 NM Holding Pattern 1500 053° 233° 1500 GP 3.00° TCH 38	174 Λ	181 TWR 233° to RWY23 3128 x 150 4288 x 150 A-2		
RWY23 1.2 NM to RWY23 NAKJA ONIDE JEMET 4 NM Holding Pattern 1500 053° 233° 1500 GP 3.00° TCH 38	174 Λ	181 TWR 233° to RWY23 3128 x 150 4288 x 150 A-2		
CATEGORY LPV DA LNAV/VNAV DA LNAV MDA CIRCLING	A 224- ³ / ₄ 313- ⁷ / ₈ 289 (300- ⁷ / ₈) 324- ⁷ / ₈ 300 (300- ⁷ / ₈) 440-1 416 (500-1)	B 200 332- ⁷ / ₈ 308 (400- ⁷ / ₈) 440-1 416 (500-1)	C 200 332- ⁷ / ₈ 308 (400- ⁷ / ₈) 440-1 416 (500-1)	D (200- ³ / ₄) 343- ⁷ / ₈ 319 (400- ⁷ / ₈) 580-2 554 (600-2)

RNAV (GPS) RWY 23

SE-2, 16 JUN 2022 to 14 JUL 2022

SE-2, 16 JUN 2022 to 14 JUL 2022