

JACKSONVILLE, NORTH CAROLINA

# RNAV (GPS) RWY 5

WAAS Chan <b>77243</b> <b>W05A</b>	APCH CRS <b>053°</b>	Rwy Idg TDZE Arprt Elev <b>5126</b> <b>26</b> <b>26</b>	AL-732 [USN]	NEW RIVER MCAS (MC CUTCHEON FLD) (KNCA)
--	-------------------------	--	--------------	---

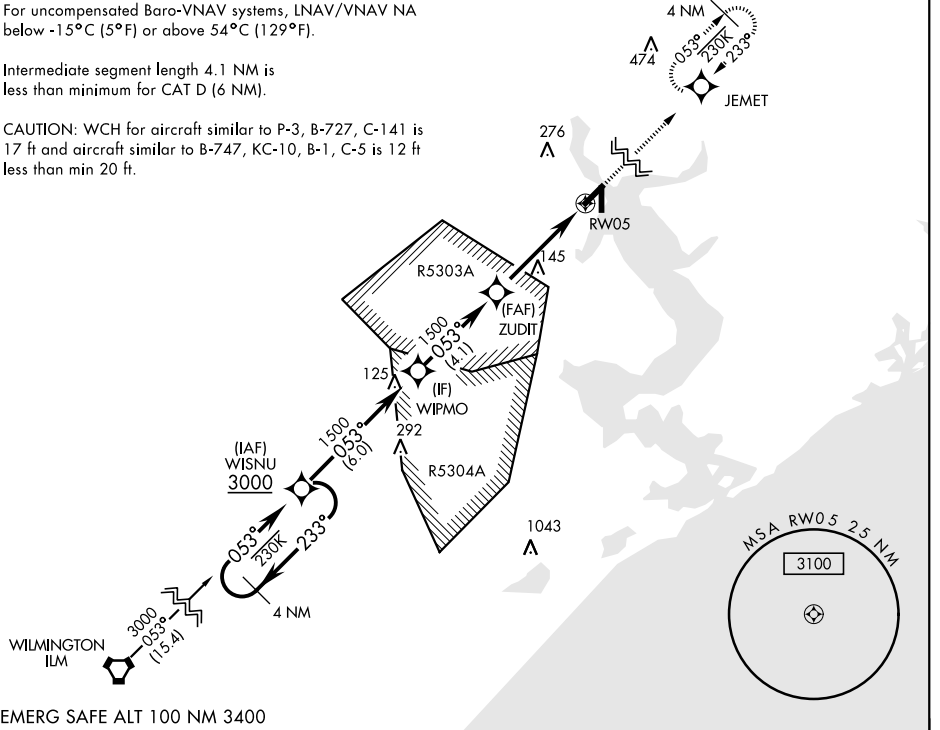
RNP APCH.	MISSED APPROACH: Climbing to 1500 direct JEMET and hold.
-----------	--

ATIS ★ <b>288.325</b>	CHERRY POINT APP CON <b>119.35 377.175</b>	TOWER ★ <b>134.95</b> (CTAF) <b>0★ 360.2</b>	GND CON <b>121.8 254.275</b>	CLNC DEL <b>269.25</b>	ASR/PAR
--------------------------	---	---	---------------------------------	---------------------------	---------

For uncompensated Baro-VNAV systems, LNAV/VNAV NA below -15°C (5°F) or above 54°C (129°F).

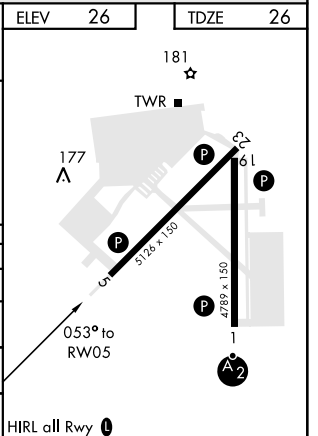
Intermediate segment length 4.1 NM is less than minimum for CAT D (6 NM).

CAUTION: WCH for aircraft similar to P-3, B-727, C-141 is 17 ft and aircraft similar to B-747, KC-10, B-1, C-5 is 12 ft less than min 20 ft.



EMERG SAFE ALT 100 NM 3400

WISNU	TCH (37) is not coincident with VGSI TCH (47).	1500	JEMET	ELEV 26	TDZE 26
3000 ← 233°	→ 053°	WIPMO	ZUDIT	1500	1500
GP 3.04°	TCH 37	1500	1500	053°	1.2 NM to RW05
			4.5 NM		
CATEGORY	A	B	C	D	
LPV DA	226- $\frac{3}{4}$		200	(200- $\frac{3}{4}$ )	
LNAV/VNAV DA	309- $\frac{7}{8}$ 283 (300- $\frac{7}{8}$ )	320- $\frac{7}{8}$ 294 (300- $\frac{7}{8}$ )	328- $\frac{7}{8}$ 302 (400- $\frac{7}{8}$ )	339- $\frac{7}{8}$ 313 (400- $\frac{7}{8}$ )	
LNAV MDA	440-1	414 (500-1)	440-1 $\frac{1}{8}$	414 (500-1 $\frac{1}{8}$ )	
CIRCLING	500-1	474 (500-1)	500-1 $\frac{1}{2}$ 474 (500-1 $\frac{1}{2}$ )	580-2 554 (600-2)	
HIRL all Rwy 0					



SE-2, 16 JUN 2022 to 14 JUL 2022

SE-2, 16 JUN 2022 to 14 JUL 2022

# RNAV (GPS) RWY 5