

TACAN RWY 1

TACAN NCA Chan 101	APCH CRS 357°	Rwy ldg TDZE Arpt Elev	4789 24 26
-----------------------	------------------	------------------------------	------------------

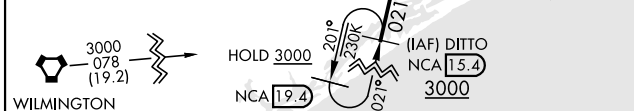
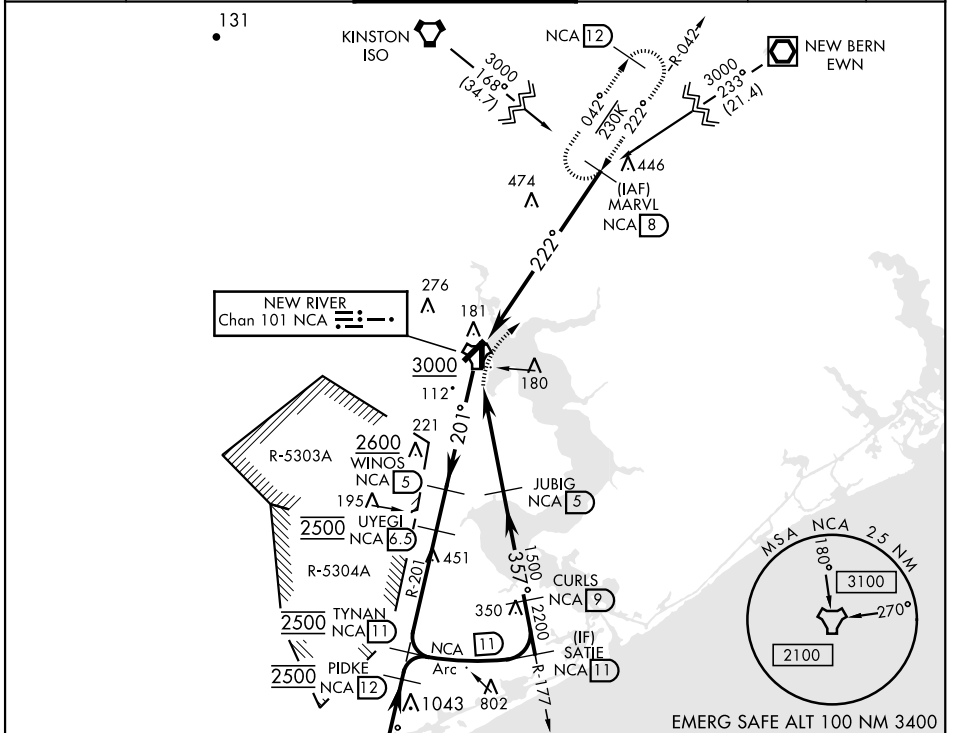
AL-732 [USN] NEW RIVER MCAS (MC CUTCHEON FLD) (KNCA)

V * When ALS inop, increase vis CAT AB to 1 mile, CAT CD to 1 1/8 miles.

 SALSF

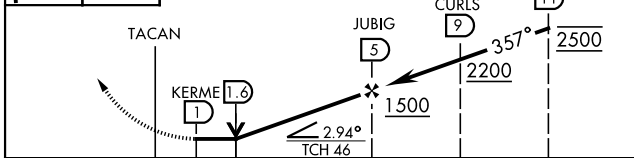
 MISSED APPROACH: Climbing right turn to 3000 direct MARVL (NCA R-042/ 8 DME) and hold. Continue climb-in-hold to 3000.

ATIS ★ 288.325	CHERRY POINT APP CON 119.35 377.175	TOWER ★ 134.95(CTAF) 0★ 360.2	GND CON 121.8 254.275	CLNC DEL 269.25	ASR/PAR
--------------------------	---	---	---------------------------------	---------------------------	---------

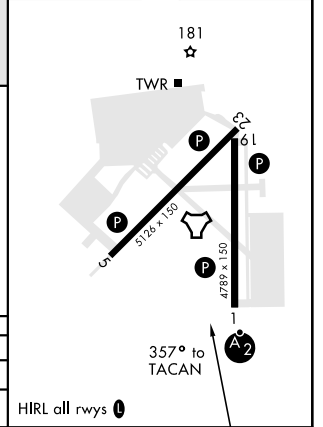


3000 MARVL NCA R-042 8

CAUTION: VGS1 and descent angle not coincident.



EMERG SAFE ALT 100 NM 3400



CATEGORY	A	B	C	D
S-1*	440-3/4	416 (500-3/4)	440-1	416 (500-1)
C CIRCLING	500-1	474 (500-1)	500-1 1/2 474 (500-1 1/2)	580-2 554 (600-2)

HIRL all rwys

JACKSONVILLE, NORTH CAROLINA 34° 43' N-77° 26' W NEW RIVER MCAS (MC CUTCHEON FLD) (KNCA)

Amtd 2 22APR21

TACAN RWY 1

SE-2, 16 JUN 2022 to 14 JUL 2022

SE-2, 16 JUN 2022 to 14 JUL 2022