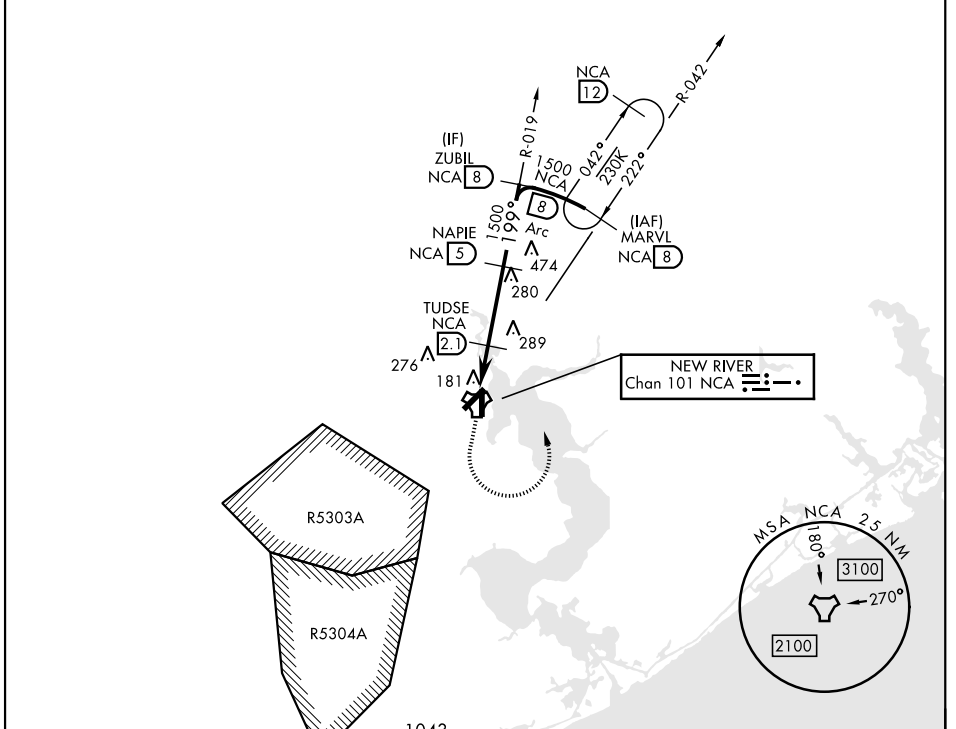


TACAN RWY 19

TACAN NCA Chan 101	APCH CRS 199°	Rwy ldg TDZE Arpt Elev	4789 23 26
-----------------------	------------------	------------------------------	------------------

AL-732 [USN] NEW RIVER MCAS (MC CUTCHEON FLD)(KNCA)

RADAR required.		MISSED APPROACH: Climbing left turn to 1500 intercept NCA R-042 direct MARVL (R-042/8 DME) and hold.			
ATIS ★ 288.325	CHERRY POINT APP CON 119.35 377.175	TOWER ★ 134.95(CTAF) 0★ 360.2	GND CON 121.8 254.275	CLNC DEL 269.25	ASR/PAR

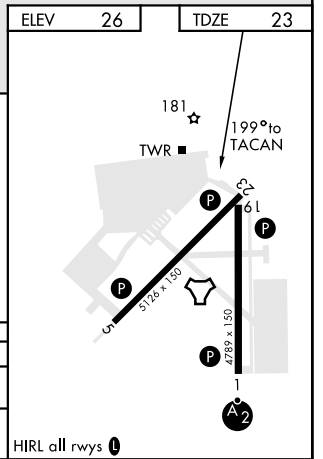
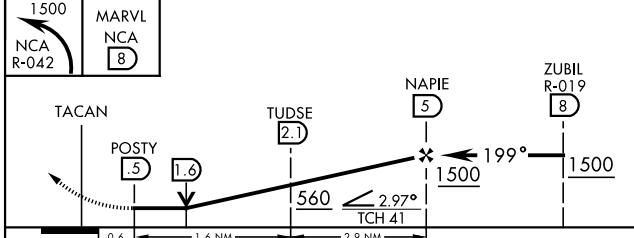


SE-2, 16 JUN 2022 to 14 JUL 2022

SE-2, 16 JUN 2022 to 14 JUL 2022

ELEV 26	TDZE 23
---------	---------

EMERG SAFE ALT 100 NM 3400



CATEGORY	A	B	C	D
S-19	440-1 417 (500-1)		440-1½ 417 (500-1½)	
CIRCLING	500-1 474 (500-1)		500-1½ 474 (500-1½)	580-2 554 (600-2)

HIRL all rwys 0

TACAN RWY 19