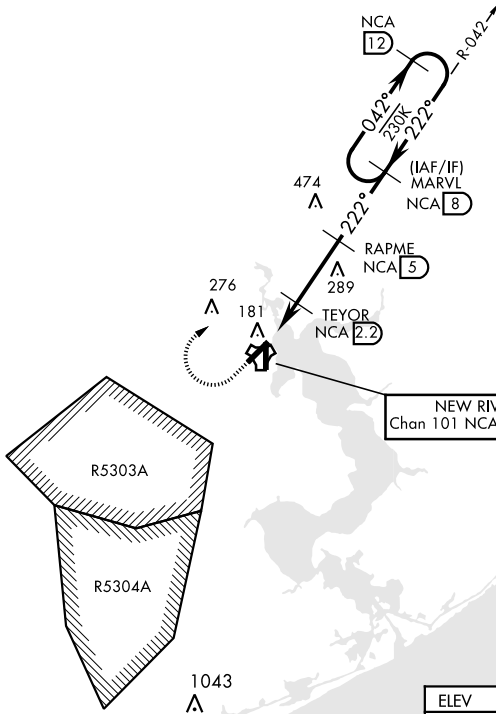


TACAN RWY 23

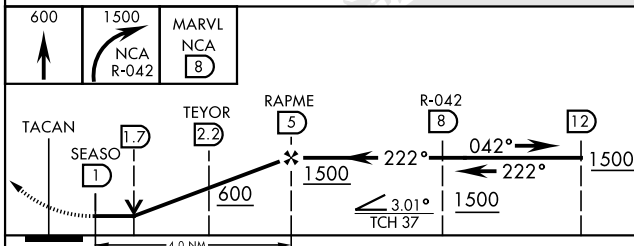
TACAN NCA Chan 101	APCH CRS 222°	Rwy Idg TDZE Arprt Elev 5126 24 26	AL-732 [USN] NEW RIVER MCAS (MC CUTCHEON FLD)(KNCA)
------------------------------	-------------------------	--	---

RADAR required for missed approach.		MISSED APPROACH: Climb to 600 then climbing right turn to 1500, intercept NCA R-042 to MARVL and hold.			
ATIS ★ 288.325	CHERRY POINT APP CON 119.35 377.175	TOWER ★ 134.95 (CTAF) 0★ 360.2	GND CON 121.8 254.275	CLNC DEL 269.25	ASR/PAR

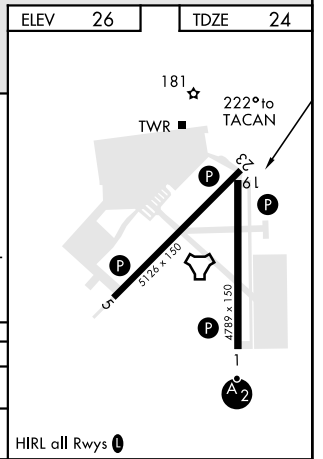
CAUTION: Intmed segment length 3 NM.



EMERG SAFE ALT 100 NM 3400



CATEGORY	A	B	C	D
S-23	440-1 416 (500-1)	440-1 1/8 416 (500-1 1/8)		
CIRCLING	500-1 474 (500-1)	500-1 1/2 474 (500-1 1/2)	580-2 554 (600-2)	



TACAN RWY 23

SE-2, 16 JUN 2022 to 14 JUL 2022

SE-2, 16 JUN 2022 to 14 JUL 2022