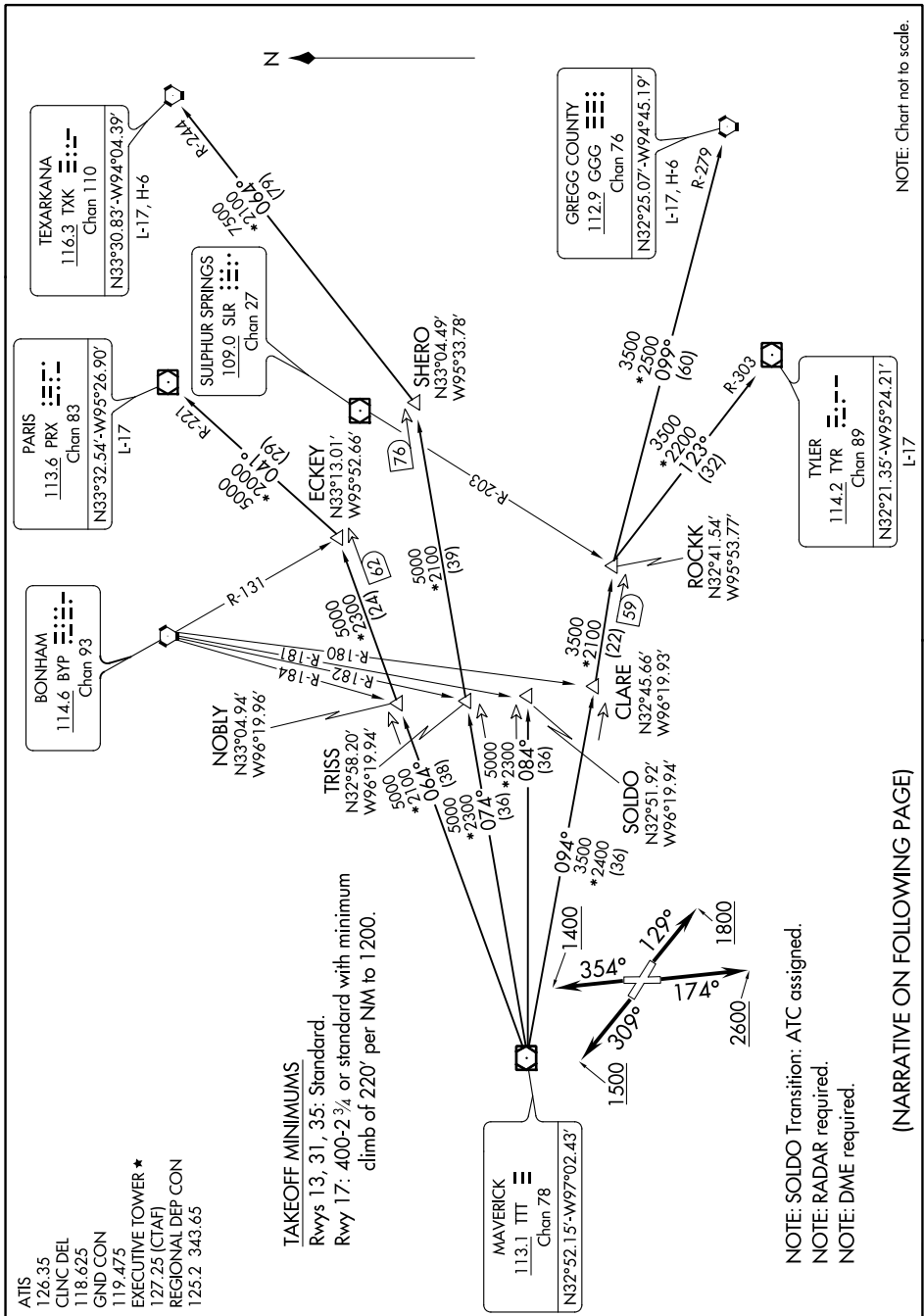


SC-2, 16 JUN 2022 to 14 JUL 2022



ATIS 126.35
 CLINC DEL 118.625
 GND CON 119.475
 EXECUTIVE TOWER * 127.25 (CTAF)
 REGIONAL DEP CON 125.2 343.65

TAKEOFF MINIMUMS
 Rwy's 13, 31, 35: Standard.
 Rwy 17: 400-2 3/4 or standard with minimum
 climb of 220' per NM to 1200.

MAVERICK
 113.1 TTT
 Chan 78
 N32°52.15'-W97°02.43'

NOTE: SOLDO Transition: ATC assigned.
 NOTE: RADAR required.
 NOTE: DME required.

(NARRATIVE ON FOLLOWING PAGE)

SC-2, 16 JUN 2022 to 14 JUL 2022